

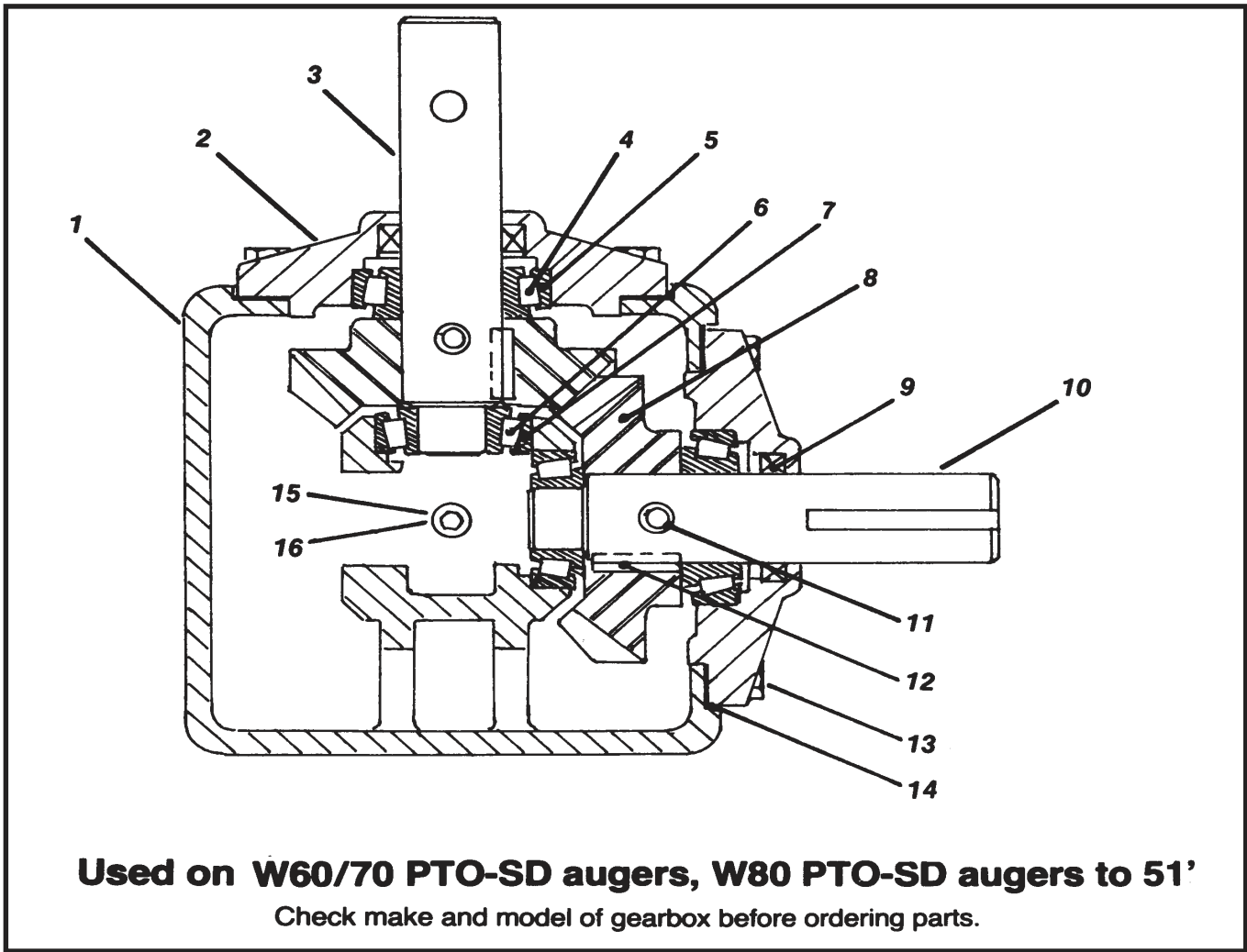
# COMPONENT PARTS

Description	Page
Gearbox model 211A (Curtis) .....	D2
Gearbox model 211M4A (Curtis) .....	D3
Gearbox model 412 (Curtis) .....	D4
Gearbox model 403 (Prairie) .....	D5
Gearbox model 416 (Prairie) .....	D6
Gearbox model 606 (Prairie) .....	D7
Winch model 5351 / 5352 (Shelby) .....	D8
Winch model 5353 (Shelby) .....	D8
Winch model 5407 (Shelby) .....	D9
Winch model T1602 (Fulton) .....	D9
Winch model 935 / K1000 / 945 (Fulton) .....	D10
Winch model 907 (Fulton) .....	D10
Winch model K1050 (Fulton) .....	D11
Winch model K1500 (Fulton) .....	D11
Winch model K2500 & K2501 (Fulton) .....	D12
Winch model K1051 (Fulton) .....	D13
Winch model K1550 (Fulton) .....	D13
Winch model K2550 (Fulton) .....	D14
PTO Driveline, non-separable (G & G) .....	D15
PTO Driveline (G & G) .....	D15
PTO Driveline (Weasler) .....	D16
TR-PTO Driveline (G & G) .....	D17
TR-PTO Driveline (Weasler) .....	D17
Constant Velocity PTO Driveline (Weasler) for <b>MK/TR</b> Augers .....	D18
Hydraulic motor (Char Lynn 104-1001 /1002) .....	D19
Decals .....	D20-22
Gearboxes for MK Augers .....	D23
Gearbox for MK130 <sup>plus</sup> Augers .....	D24
Gearbox model 2103 (Prairie) .....	D25
Gearbox model CH585 .....	D26
Gearbox model 2306 .....	D27
PTO Driveline (Weasler) 35 series .....	D28
Sidewinder Jack .....	D29

COMPONENT PARTS  
SAFETY DECALS

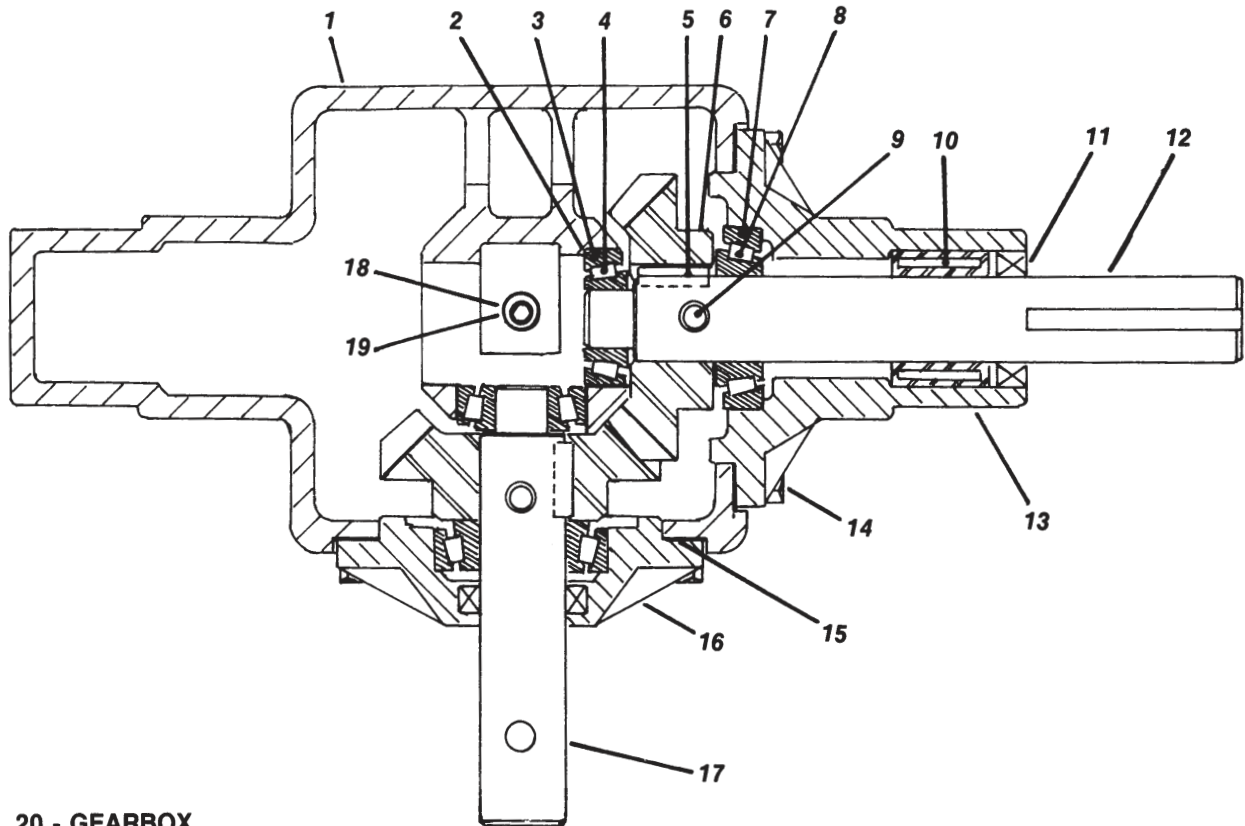
D

# Gear Box Model 211A ("Curtis")



REF. NO.	PART NO.	PARTS DESCRIPTION	NO. REQ'D
1	18395	Housing	1
2	18391	Cap	2
3	18392	Shaft	1
4	18383	Bearing cone, Timken #L 44643	2
5	18382	Bearing cup, Timken #L 44610	2
6	18379	Bearing cone, Timken #LM 11749	2
7	18378	Bearing cup, Timken #LM 11710	2
8	18381	Gear	2
9	18386	Seal, (National #470553, CR #9843)	2
10	18396	Shaft	1
11	18079	Rod pin, 5/16" x 2"	2
12	18380	Sq. key, 1/4" x 3/4"	2
13	18091	Bolt, 5/16" - 18 x 1", grade 2	8
14	18390	Gasket (.005)	X
15	18393	1/4" pipe plug-solid	1
16	18394	1/4" pipe plug-vented	1

# Gear Box Model 211 M4A ("Curtis")



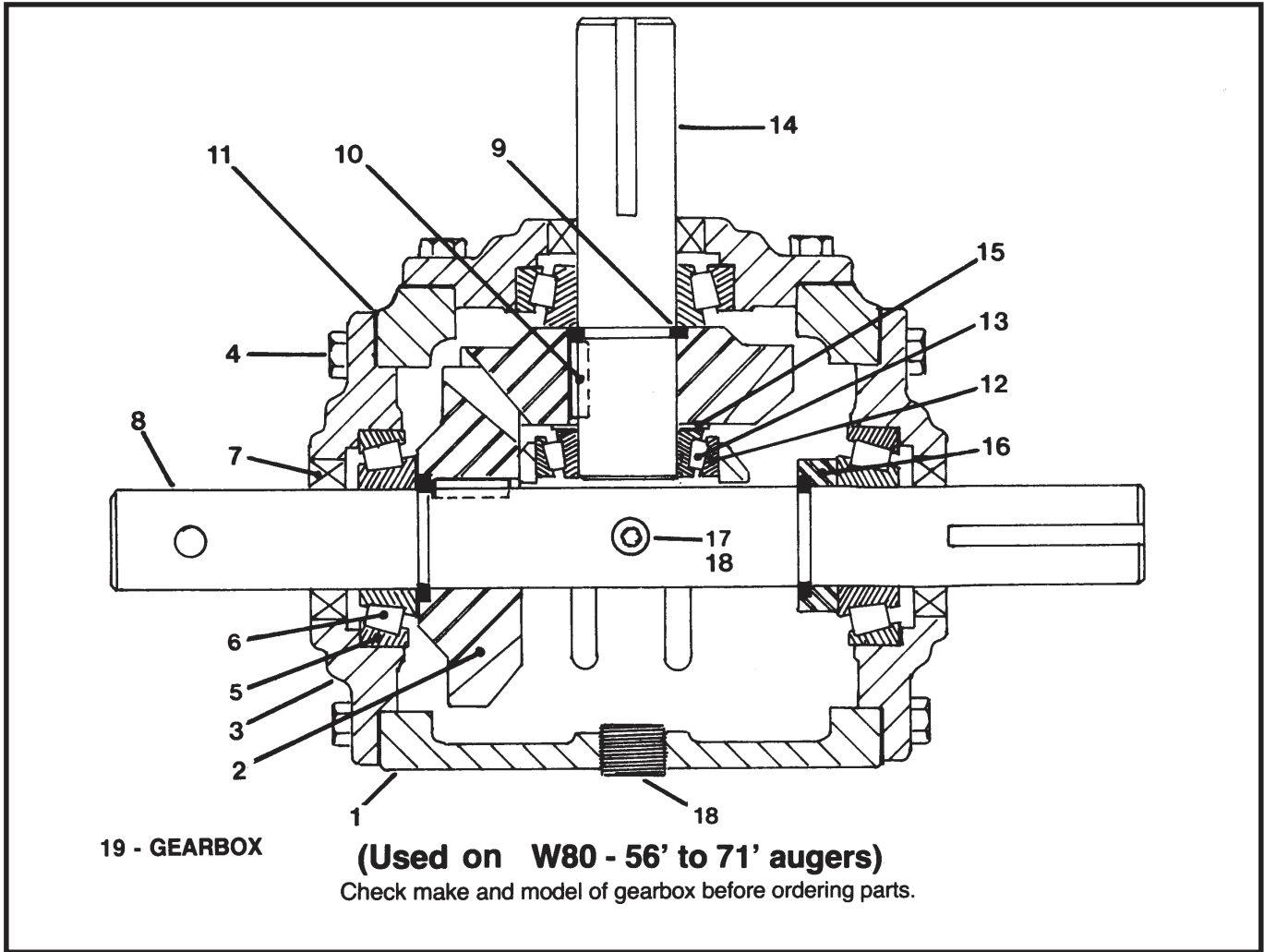
**20 - GEARBOX**

**(Used on Augers with PTO-BD drive)**

Check make and model of gearbox before ordering parts.

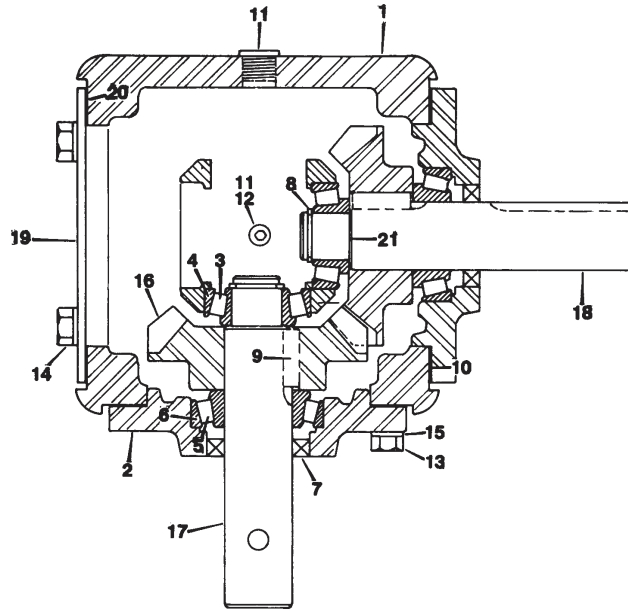
REF. NO.	PART NO.	PARTS DESCRIPTION	NO. REQ'D
1	18376	Housing	1
2	18377	Shim (.005)	X
3	18378	Bearing cup, Timken #LM 11710	2
4	18379	Bearing cone, Timken #LM 11749	2
5	18380	Sq. key, 1/4" x 3/4"	2
6	18381	Gear	2
7	18382	Bearing cup, Timken #LM 44610	2
8	18383	Bearing cone, Timken #LM 44643	2
9	18079	Roll pin	2
10	18385	Bushing	1
11	18386	Seal, (National #470553, CR #9843)	2
12	18387	Shaft	1
13	18388	Cap	1
14	18091	Bolt, 5/16" - 18 x 1", grade 2	8
15	18390	Gasket (.005)	X
16	18391	Cap	1
17	18392	Shaft	1
18	18393	1/4" pipe plug-solid	1
19	18394	1/4" pipe plug-vented	1
20	19473	Gearbox, complete	

# Gear Box Model 412 ("Curtis")



REF. NO.	PART NO.	PARTS DESCRIPTION	NO. REQ'D
1	18397	Housing	1
2	18398	Gear	2
3	18399	Cap	3
4	19955	Bolt, 3/8" - 16 x 1", grade 2	24
5	18401	Bearing cup, Timken #14276	3
6	18402	Bearing cone, Timken #14124	3
7	18403	Seal, (National #470163, CR #12458)	3
8	18404	Shaft	1
9	18405	Retaining ring	3
10	18406	Sq. key, 1/4" x 1-1/8"	2
11	18407	Gasket (.005)	X
12	19266	Bearing cup, Timken #LM 67010	1
13	19265	Bearing cone, Timken #LM 67048	1
14	18410	Shaft	1
15	18411	Shim (.005)	X
16	18412	Thrust collar	1
17	18413	1/2" pipe plug-vented	1
18	18414	1/2" pipe plug-solid	2
19	19585	Gearbox, complete	

# Gear Box Model 403 ("Prairie")



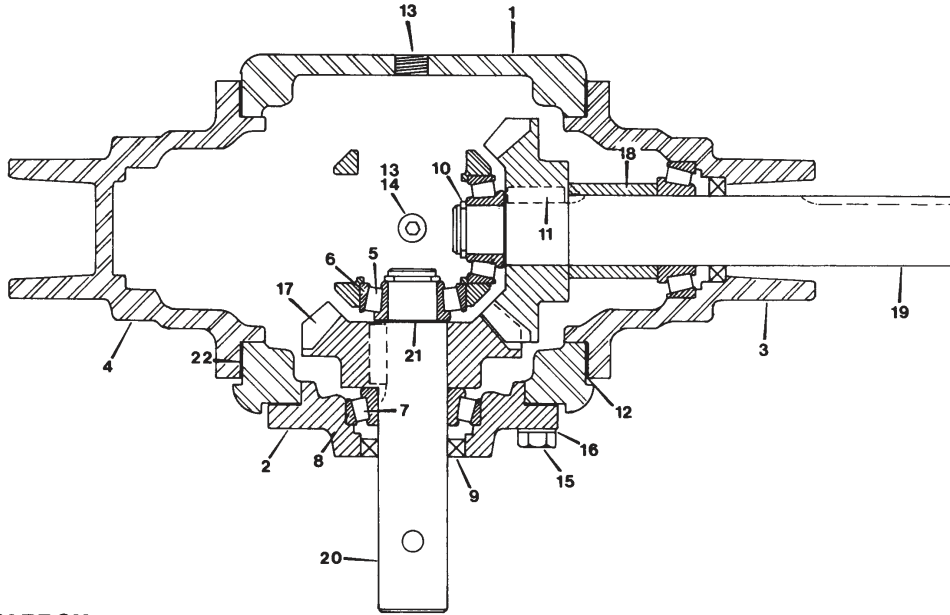
**22 - GEARBOX**

**(Used on W60, 70, 80 PTO-SD Augers to 51')**

Check make and model of gearbox before ordering parts.

REF. NO.	PART NO.	PARTS DESCRIPTION	NO. REQ'D
1	<b>18395</b>	Housing	1
2	<b>18391</b>	Bearing cap	2
3	<b>18379</b>	Bearing cone, Timken #LM 11749	2
4	<b>18378</b>	Bearing cup, Timken #LM 11710	2
5	<b>18383</b>	Bearing cone, Timken #L 44643	2
6	<b>18382</b>	Bearing cup, Timken #L 44610	2
7	<b>18386</b>	Seal, (National #470553, CR #9843)	2
8	<b>18420</b>	Retainer	2
9	<b>18380</b>	Sq. key, 1/4" x 3/4"	2
10	<b>18390</b>	Gasket (.005)	X
11	<b>18393</b>	1/4" pipe plug, solid	2
12	<b>18394</b>	1/4" pipe plug, vented	1
13	<b>18091</b>	Bolt, 5/16" - 18 x 1", grade 2	8
14	<b>19538</b>	Bolt, 5/16" - 18 x 3/4", grade 2	4
15	<b>19603</b>	Lockwasher, 5/16"	12
16	<b>18381</b>	Gear	2
17	<b>18409</b>	Pinion shaft	1
18	<b>18416</b>	Pinion shaft	1
19	<b>18419</b>	Cover plate	1
20	<b>18390</b>	Gasket	1
21	<b>18415</b>	Shim spacer	2
22	<b>19455</b>	Gearbox, complete	

# Gear Box Model 416 ("Prairie")



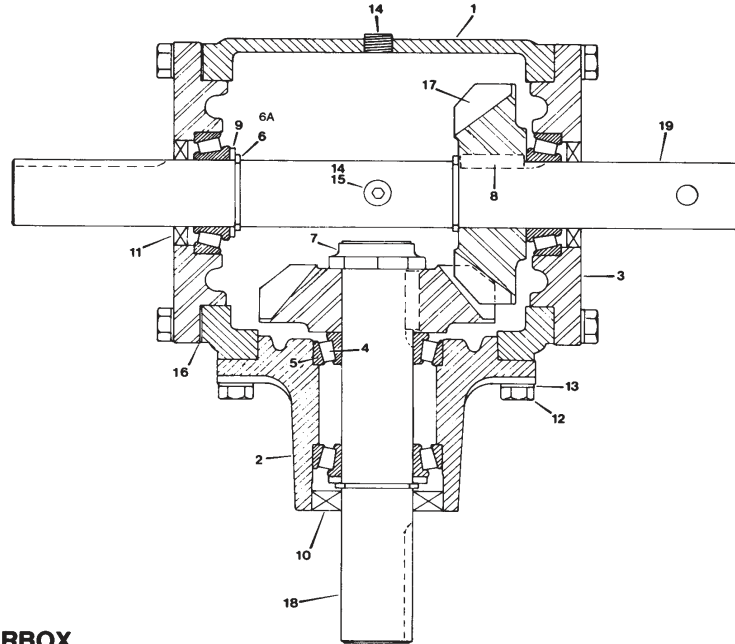
**23 - GEARBOX**

**(Used on PTO-BD Augers)**

Check make and model of gearbox before ordering parts.

REF. NO.	PART NO.	PARTS DESCRIPTION	NO. REQ'D
1	18395	Housing	1
2	18391	Bearing cap	1
3	18417	Bearing cap	1
4	18418	Cover cap	1
5	18379	Bearing cone, Timken #LM 11749	2
6	18378	Bearing cup, Timken #LM 11710	2
7	18383	Bearing cone, Timken #L 44643	2
8	18382	Bearing cup, Timken #1 44610	2
9	18386	Seal, (National \$470553, CR #9843)	2
10	18420	Retainer	2
11	18380	Sq. key, 1/4" x 3/4"	2
12	18390	Gasket (.005)	X
13	18393	1/4" pipe plug, solid	2
14	18394	1/4" pipe plug, vented	1
15	18091	Bolt, 5/16" - 18 x 1", grade 2	12
16	19603	Lockwasher, 5/16"	12
17	18381	Gear	2
18	18384	Spacer	1
19	18408	Pinion shaft, w/keyway	1
20	18409	Pinion shaft, w/hole	1
21	18415	Shim spacer	2
22	18390	Gasket	1
23	19473	Gearbox, complete	

# Gear Box Model 606 ("Prairie")



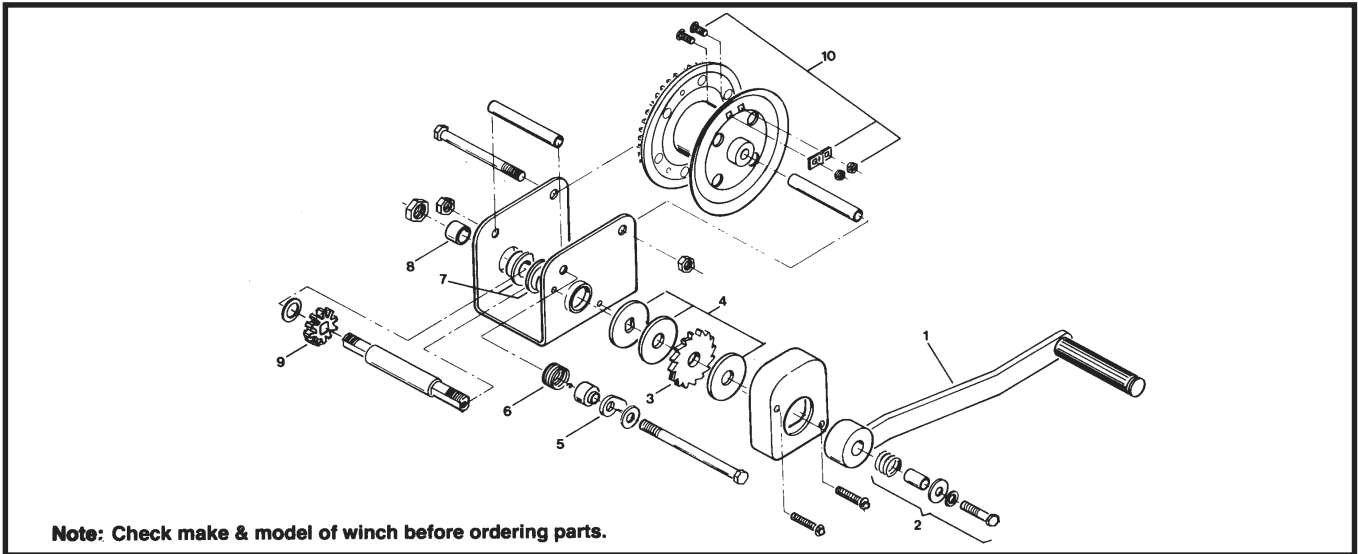
**20 - GEARBOX**

**(Used on W80 - 56'/61'/71' PTO-SD Augers  
and W100 PTO-SD Augers)**

Check make and model of gearbox before ordering parts.

REF. NO.	PART NO.	PARTS DESCRIPTION	NO. REQ'D
1	18421	Housing	1
2	18422	Pinion housing	1
3	18423	Bearing cap	2
4	19265	Bearing cone, Timken #LM 67048	4
5	19266	Bearing cup, Timken #LM 67010	4
6	18405	Retainer, wide (0.159")	3
6A	18962	Retainer, narrow (0.095")	
7	18424	Stake nut	1
8	18406	Sq. key, 1/4" x 1-1/8"	2
9	18426	Spacer	2
10	18427	Seal, CR #12614	1
11	18403	Seal, (National #470163, CR #12458)	2
12	19955	Bolt, 3/8" - 16 x 1", grade 2	12
13	19604	Lockwasher, 3/8	12
14	18393	1/4" pipe plug, solid	2
15	18394	1/4" pipe plug, vented	1
16	18553	Gasket (.005)	X
17	18428	Gear	2
18	18429	Pinion shaft	1
19	18430	Thru shaft	1
20	19585	Gearbox, complete	

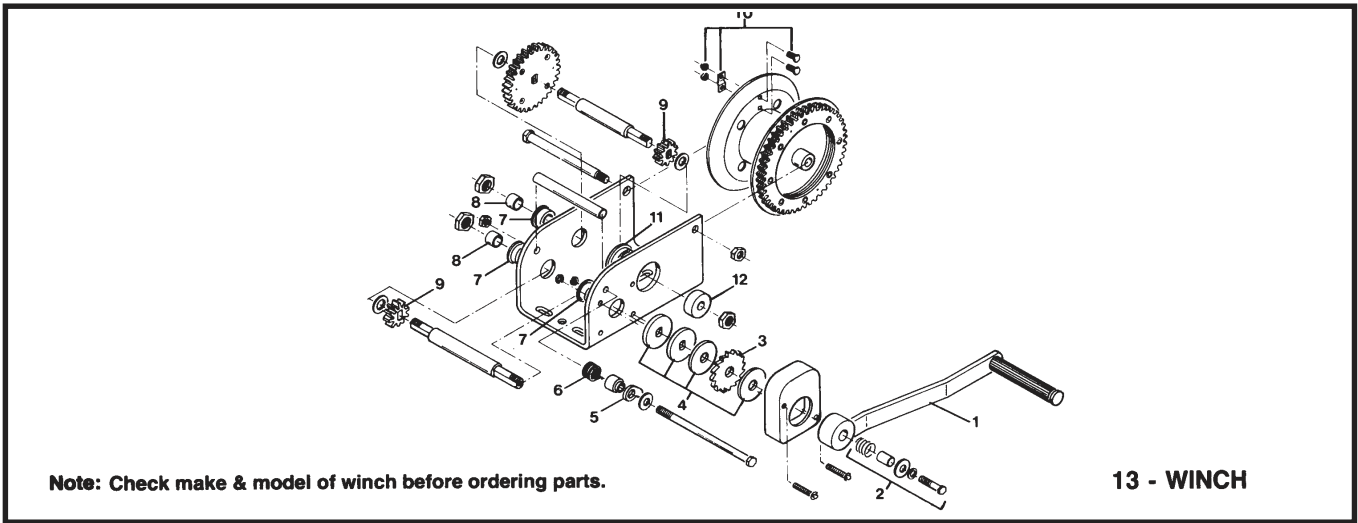
# Winch (Shelby Model 5351/5352)



REF. NO.	PART NO.	PARTS DESCRIPTION
1	18508	Handle
2	18509	Handle retainer kit
3	18510	Ratchet, brake
4	18520	Brake pad kit
5	18512	Pawl
6	18513	Pawl spring
7	18514	Bushing

REF. NO.	PART NO.	PARTS DESCRIPTION
8	18521	Bearing
9	18516	Sprocket, pinion
10	18496	Rope keeper

# Winch (Shelby Model 5353)



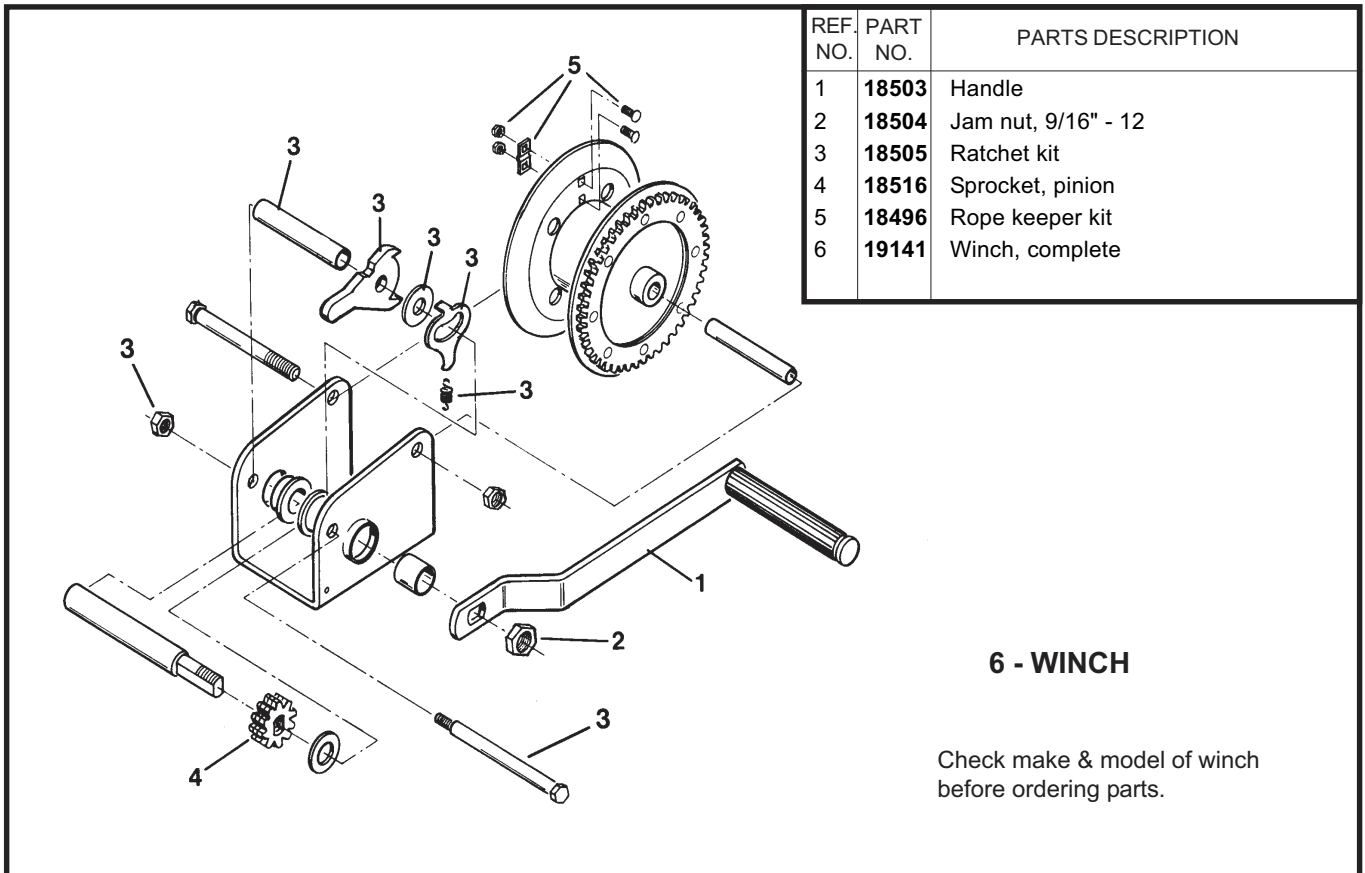
13 - WINCH

REF. NO.	PART NO.	PARTS DESCRIPTION
1	18508	Handle
2	18509	Handle retainer kit
3	18510	Ratchet, brake
4	18511	Brake pad kit
5	18512	Pawl
6	18513	Pawl spring
7	18514	Bushing

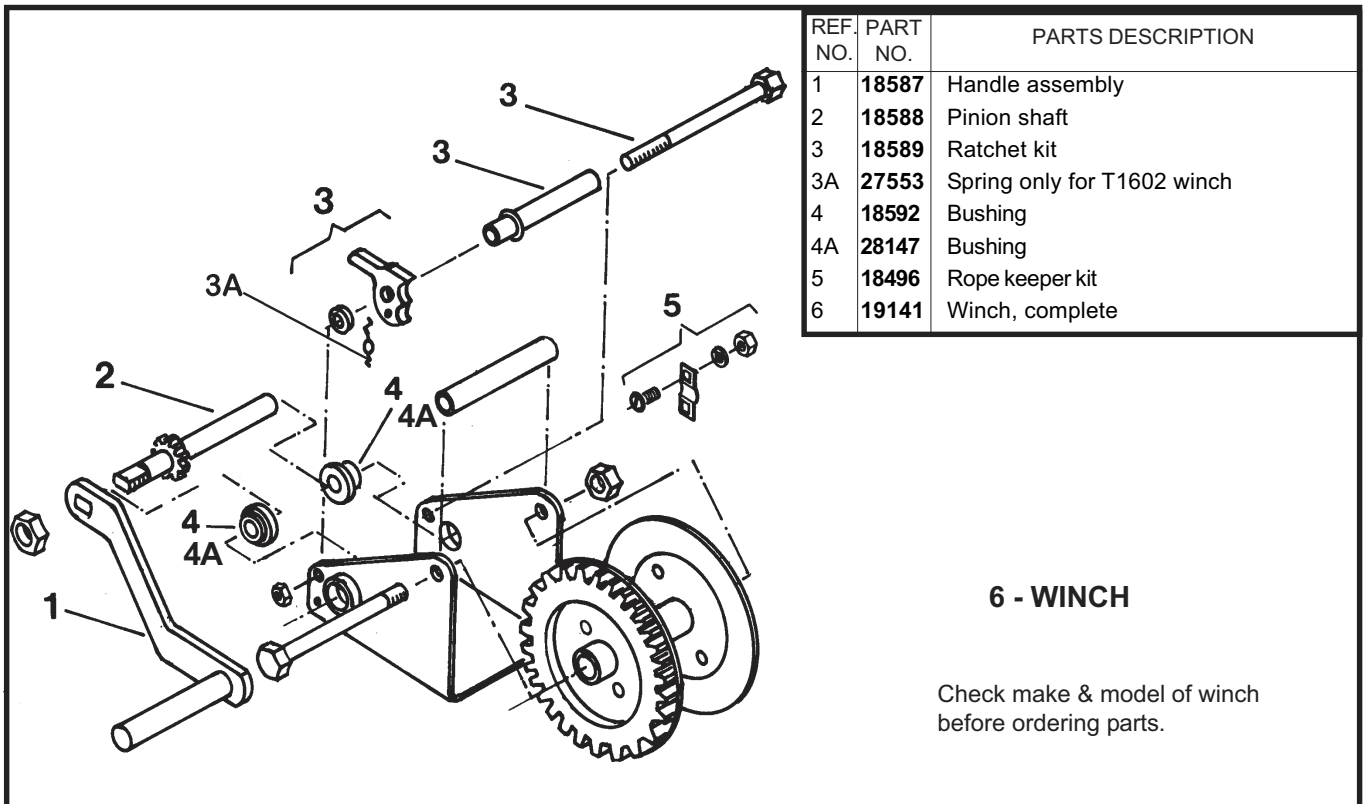
REF. NO.	PART NO.	PARTS DESCRIPTION
8	18521	Bushing
9	18516	Sprocket, pinion
10	18496	Rope keeper
11	18517	Bushing
12	18519	Bushing
13	19569	Winch, complete



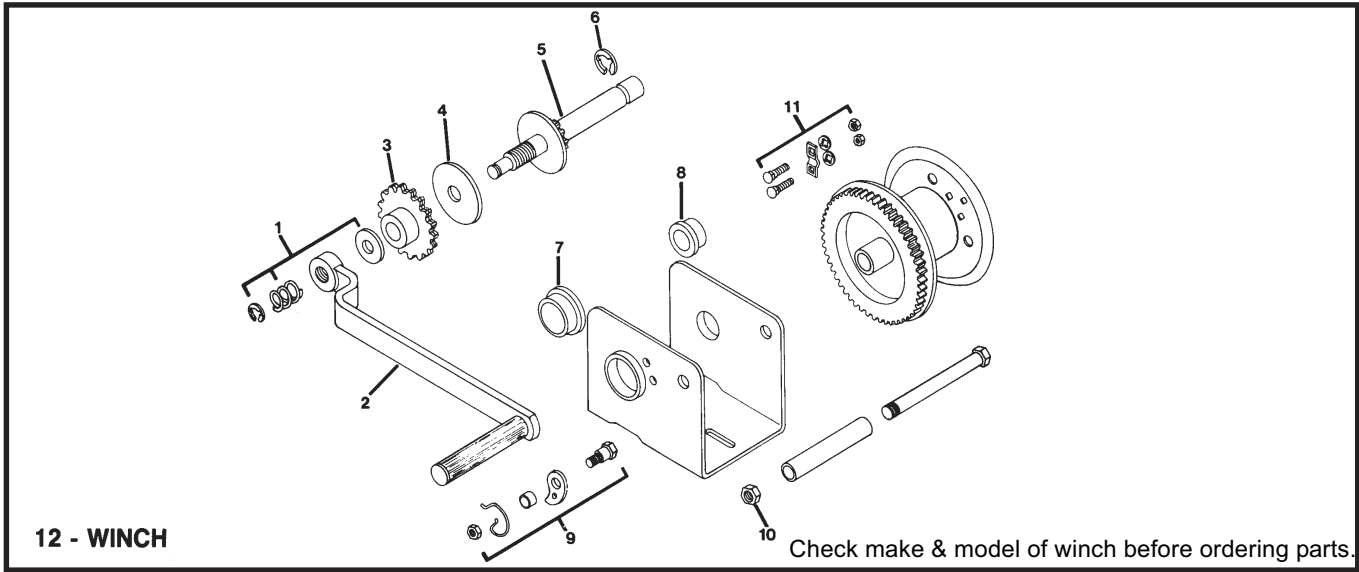
## Winch (Shelby Model 5407)



## Winch (Fulton Model T1602)



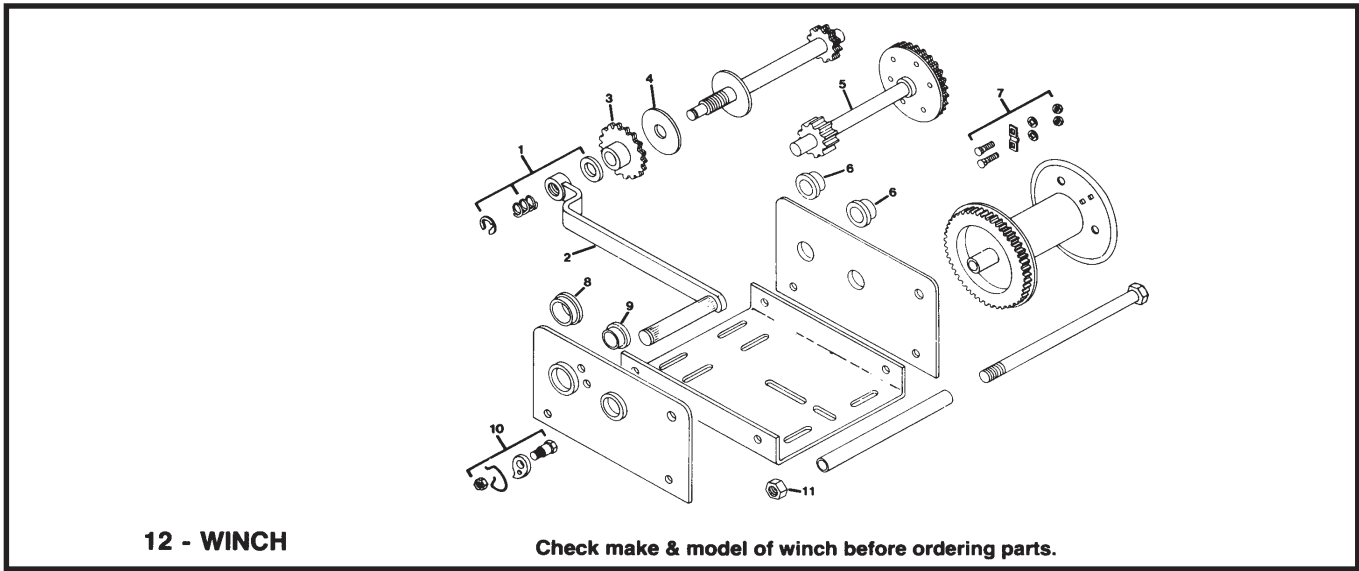
# Winch (Fulton Model 935, K1000 & 945)



REF. NO.	PART NO.		PARTS DESCRIPTION
	935/K100	945	
1	18431	18431	Retainer ring, spring, disc & rope keeper kit
2	18432	18432	Handle
3	18433	18522	Ratchet gear
4	18434	18523	Brake face
5	—	—	Not available
6	18436	18436	Retainer ring
7	18437	18437	Bushing, large

REF. NO.	PART NO.		PARTS DESCRIPTION
	935/K100	945	
8	18438	18438	Bushing, small
9	18439	18439	Ratchet kit
10	19996	—	Locknut, 3/8" - 16
10	—	19599	Locknut, 1/2" - 13
11	18496	18496	Rope keeper kit
12	19151	19152	Winch, complete

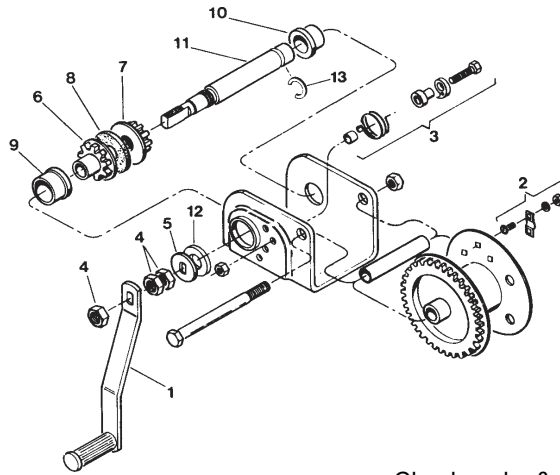
# Winch (Fulton Model 970)



REF. NO.	PART NO.		PARTS DESCRIPTION
	935/K100	945	
1	18431	18431	Retainer ring, spring, disc & rope keeper kit
2	18432	18432	Handle
3	18522	18522	Ratchet gear
4	18523	18523	Brake face
5	—	—	Not available
6	18526	18526	Bushing, small

REF. NO.	PART NO.		PARTS DESCRIPTION
	935/K100	945	
7	18496	18496	Rope keeper kit
8	18437	18437	Bushing, large
9	—	—	Bushing, medium N/A
10	18439	18439	Ratchet kit
11	19600	19600	Locknut, 5/8" - 11
12	19569	19569	Winch, complete

# Winch (Fulton Model K1050)



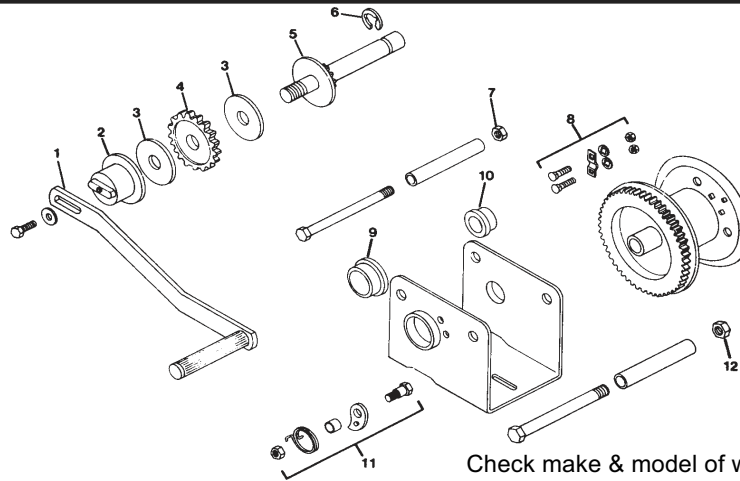
**14 - WINCH**

Check make & model of winch before ordering parts.

REF. NO.	PART NO.	PARTS DESCRIPTION
1	18561	Handle assembly
2	18496	Rope keeper kit
3	18439	Ratchet kit
4	18567	Locknut, 1/2" - 13
5	18580	Brake disc
6	18581	Ratchet assembly
7	18582	Pinion gear assembly
8	18583	Friction disc
9	18437	Steel bushing,

REF. NO.	PART NO.	PARTS DESCRIPTION
10	18438	Steel bushing
11	18584	Pinion shaft
12	18585	Thrust washer
13	18436	Retainer ring
14	19151	Winch, complete

# Winch (Fulton Model K1500)



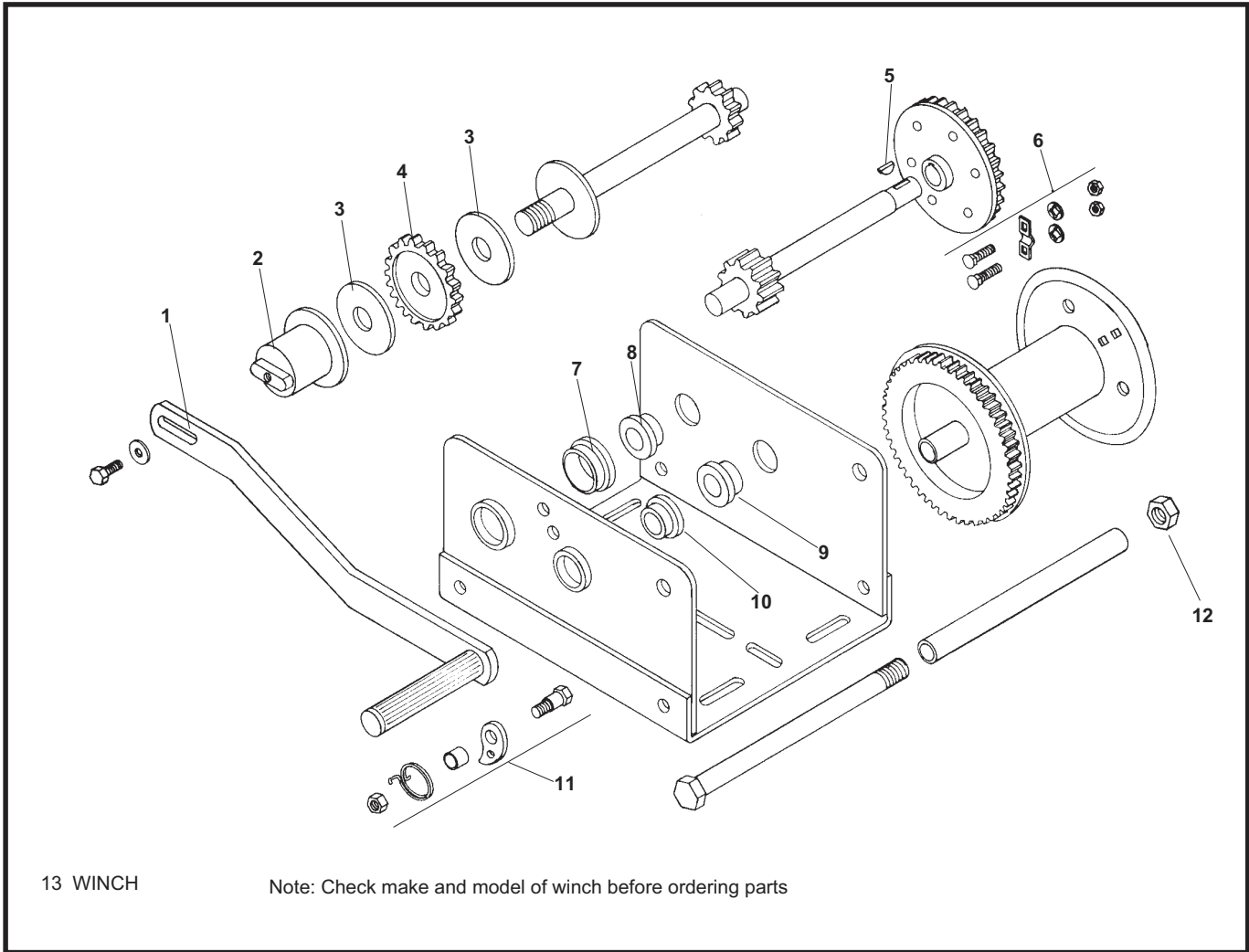
**13 - WINCH**

Check make & model of winch before ordering parts.

REF. NO.	PART NO.	PARTS DESCRIPTION
1	18492	Handle
2	18493	Brake nut
3	18494	Brake face
4	18495	Ratchet gear
5		Not available
6	18436	Retainer ring
7	19996	Locknut, 3/8" - 16

REF. NO.	PART NO.	PARTS DESCRIPTION
8	18496	Rope keeper kit
9	18437	Bushing, large
10	18438	Bushing, small
11	18497	Ratchet kit
12	19599	Locknut, 1/2" - 13
13	19152	Winch, complete

# Winch (Fulton model K2500 & K2501)



13 WINCH

Note: Check make and model of winch before ordering parts

REF. NO.	PART NO.		PARTS DESCRIPTION
	K2500	K2501	
1	18492	18492	Handle assembly
2	18493	18493	Brake nut assembly
3	18494	18494	Friction disc
4	18495	18495	Ratchet gear
5	18556	18556	Woodruff key, 1/8" x 5/8"
6	18496	18496	Rope keeper kit
7	18437	18437	Steel bushing
8	18498	---	Steel bushing

REF. NO.	PART NO.		PARTS DESCRIPTION
	K2500	K2501	
8	---	18526	Steel bushing
9	---	18558	Steel bushing
9	18498	---	Steel bushing
10	18557	---	Steel bushing N/A
10	---	18526	Steel bushing
11	18497	18497	Ratchet kit
12	19600	19600	Locknut, 5/8" - 11
13	19569	19569	Winch, complete

## Winch (Fulton Model K1051)

REF. NO.	PART NO.	PARTS DESCRIPTION
1	18561	Handle assembly
2	18496	Rope keeper kit
3	18439	Ratchet kit
4	18567	Locknut, 1/2" - 13
5	18580	Brake disc
6	18581	Ratchet assembly
7	18582	Pinion gear assembly
8	18583	Friction disc
9	18437	Bushing
10	18438	Bushing
11	18584	Pinion shaft
12	18585	Thrust washer
13	18436	Retainer ring
14	19151	Winch, complete

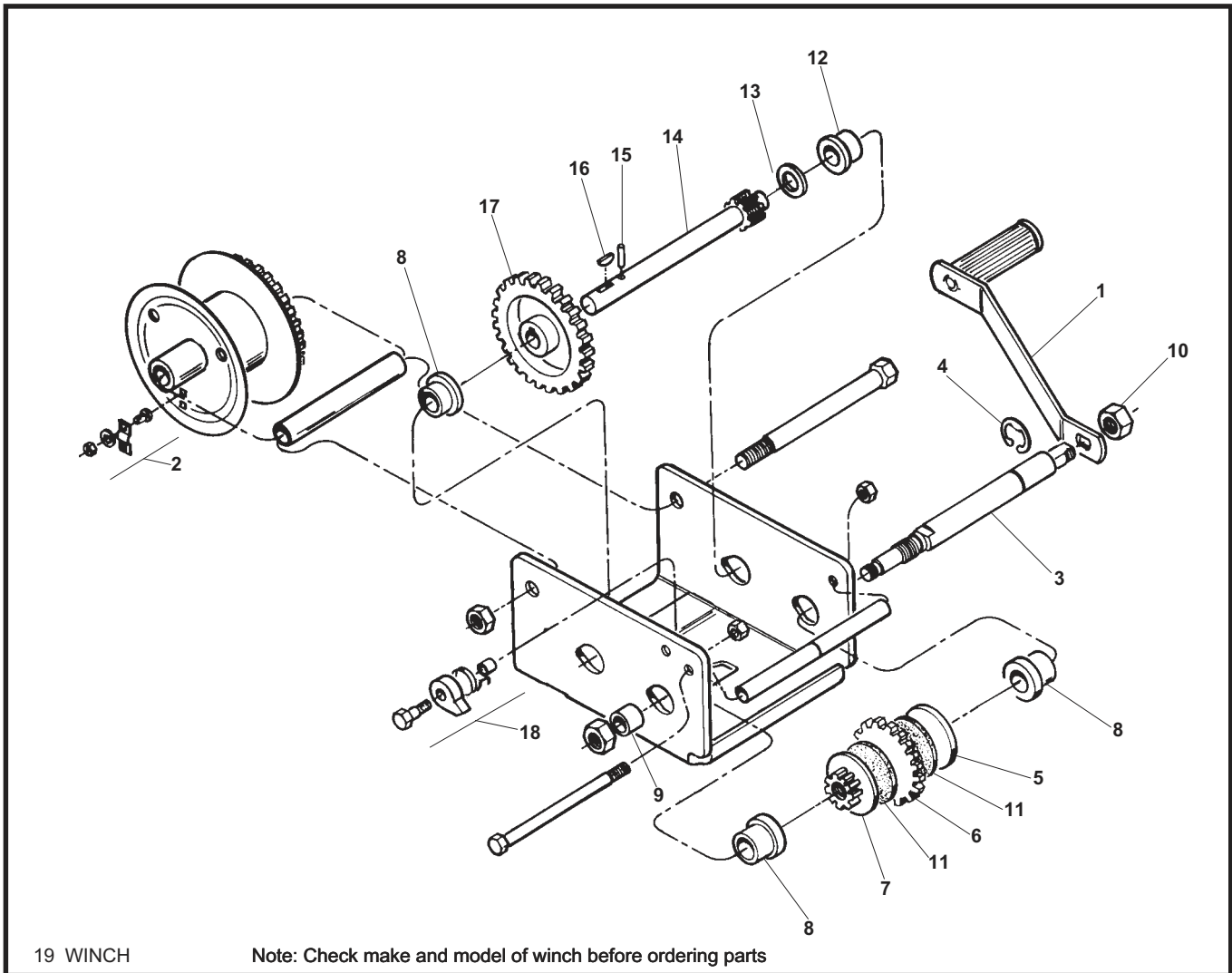
**14 - WINCH**      **Note: Check make & model of winch before ordering parts.**

## Winch (Fulton Model K1550)

REF. NO.	PART NO.	PARTS DESCRIPTION
1	18561	Handle assembly
2	18496	Rope keeper kit
3	18497	Ratchet kit
4	18573	Friction disc
5	18574	Input shaft
6	18567	Locknut, 1/2" - 13, special
7	18575	Spacer
8	18438	Steel bushing
9	18576	Brake disc
10	18577	Ratchet gear assembly
11	18578	Pinion and disc assembly
12	19152	Winch, complete

**12 - WINCH**      **Note: Check make & model of winch before ordering parts.**

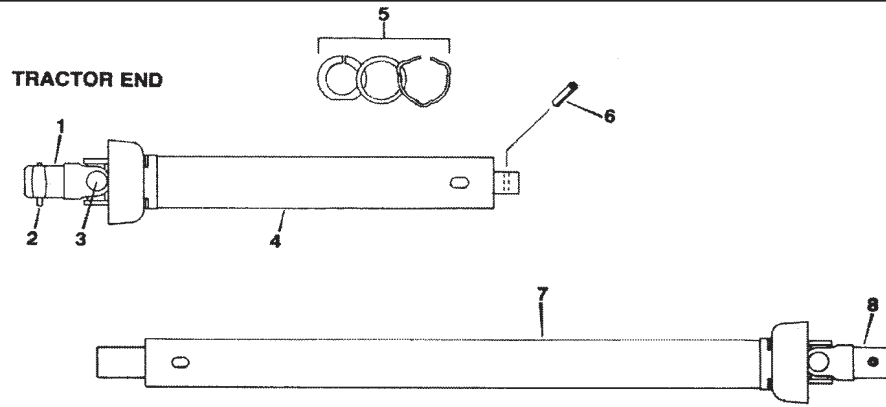
# Winch (Fulton model K2550)



REF. NO.	PART NO.	PARTS DESCRIPTION
1	18561	Handle assembly
2	18496	Rope keeper kit
3	18562	Input shaft
4	18436	Retainer ring
5	18563	Brake disc
6	18564	Ratchet gear
7	18565	Pinion gear
8	18558	Steel bushing
9	18566	Spacer
10	18567	Locknut, 1/2" - 13, special

REF. NO.	PART NO.	PARTS DESCRIPTION
11	18568	Friction disc
12	18526	Steel bushing
13	18569	Washer, special
14	18570	Intermediate shaft assembly
15	18571	Roll pin (Fulton 212-01)
16	18556	Woodruff key, 1/8" x 5/8"
17	18572	Ratchet gear assembly
18	18497	Ratchet kit
19	19569	Winch, complete

# PTO-Shaft, Non Separable ("G & G")



**(12R and 14R series, 48" and 60" long)**

REF. NO.	PART NO.		PARTS DESCRIPTION
	12R	14R	
1	18471	18477	Snap hitch yoke
2	18472	18478	Pin, spring and keeper
3	18473	18459	Repair kit, universal joint
4	19887	19887	Outer plastic shield, 48" model
4	19890	19890	Outer plastic shield, 60" model
5	18474	18474	Nylon bearing, thrust washer, snap ring

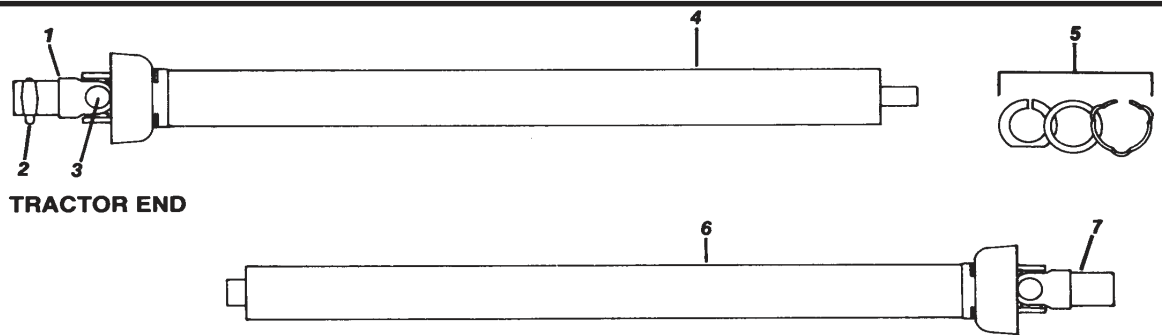
REF. NO.	PART NO.		PARTS DESCRIPTION
	12R	14R	
6	18475	18475	Roller pin, 5/16" x 1-1/4"
7	19888	19888	Inner plastic shield, 48" model!
7	19892	19892	Inner plastic shield, 60" model
8	18476		Implement yoke, 1" bore
8		18480	Implement yoke, 1-1/4" bore

Note- Check correct length and model before ordering shields

12R Series used with W60/W70/W80 PTO drive augers to 51'

14R Series used with W80 - 56'/61'/71' and W100 PTO drives

# PTO-Shaft (G&G)



**(12R and 14R series, 48" long)**

REF. NO.	PART NO.		PARTS DESCRIPTION
	12R	14R	
1	18471	18477	Snap hitch yoke
2	18472	18478	Pin, spring and keeper
3	18473	18459	Repair kit, universal joint
4	18481	18481	Outer plastic shield
5	18474	18474	Nylon bearing, thrust washer, snap ring
6	18482	18482	Inner plastic shield
7	18476	—	Implement yoke, 1" bore
7	—	18480	Implement yoke, 1-1/4" bore

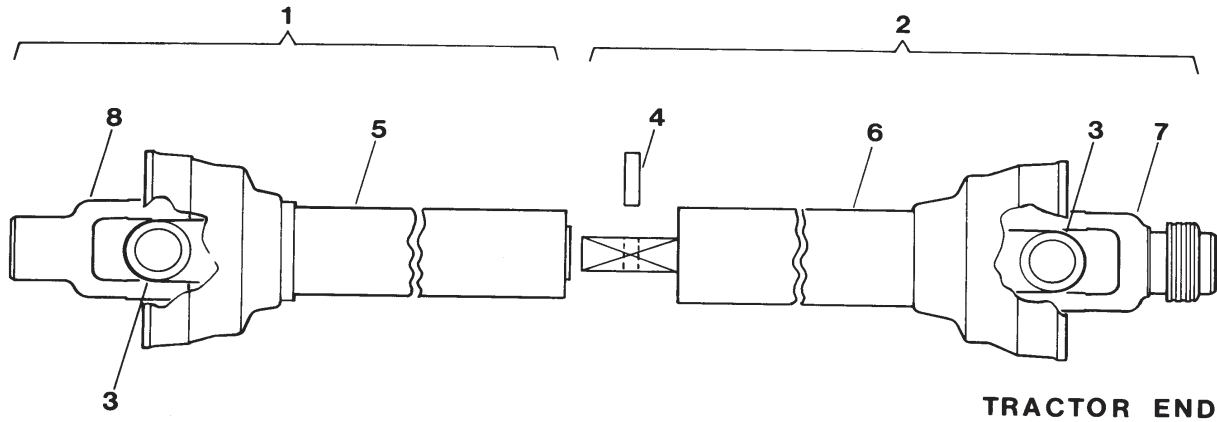
Note:

Check correct length and model before ordering shields

12R series used with all PTO augers to 51'

14R series used with W80 - 56'/61'/71' PTO drives

# PTO-Shaft (Weasler)



**9 & 9A - PTO SHAFT**

**(12R & 14R 48" & 60" long)**

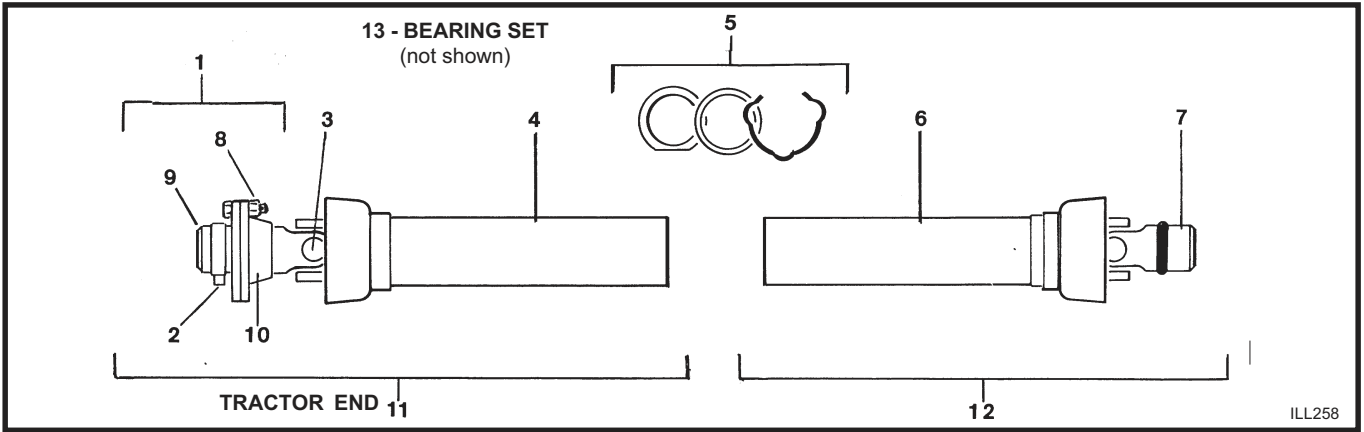
REF. NO.	PART NO.		PARTS DESCRIPTION
	12R	14R	
1	<b>18594</b>		1/2 PTO shaft, implement end, 48"
1	<b>18595</b>	<b>18599</b>	1/2 PTO shaft, implement end, 60"
2	<b>18596</b>		1/2 PTO shaft, tractor end, 48"
2	<b>18597</b>	<b>18601</b>	1/2 PTO shaft, tractor end, 60"
3	<b>18473</b>	<b>18459</b>	Universal joint repair kit
4	<b>18593</b>	<b>18593</b>	Roll pin, 1/4" x 1"
5	<b>18602</b>		Inner plastic shield, 48", c/w retainer ring & nylon bearing
5	<b>18603</b>	<b>18603</b>	Inner plastic shield, 60", c/w retainer ring and nylon bearing
6	<b>18604</b>		Outer plastic shield, 48", c/w retainer ring & nylon bearing
6	<b>18605</b>	<b>18605</b>	Outer plastic shield, 60", c/w retainer ring & nylon bearing
7	<b>18471</b>	<b>18477</b>	Snap hitch yoke
8	<b>18476</b>		Implement yoke, 1" bore
8		<b>18480</b>	Implement yoke, 1-1/4" bore
9	<b>19520</b>		48" PTO - Shaft, complete
9A	<b>19945</b>	<b>19806</b>	60" PTO - Shaft, complete

Check correct length and model before ordering parts.

12R Series used with W60/W70/W80 PTO drive augers to 51'  
14R Series used with W80 - 56'/61'/71' and W100 PTO drives



# TR - PTO Shaft (G & G)



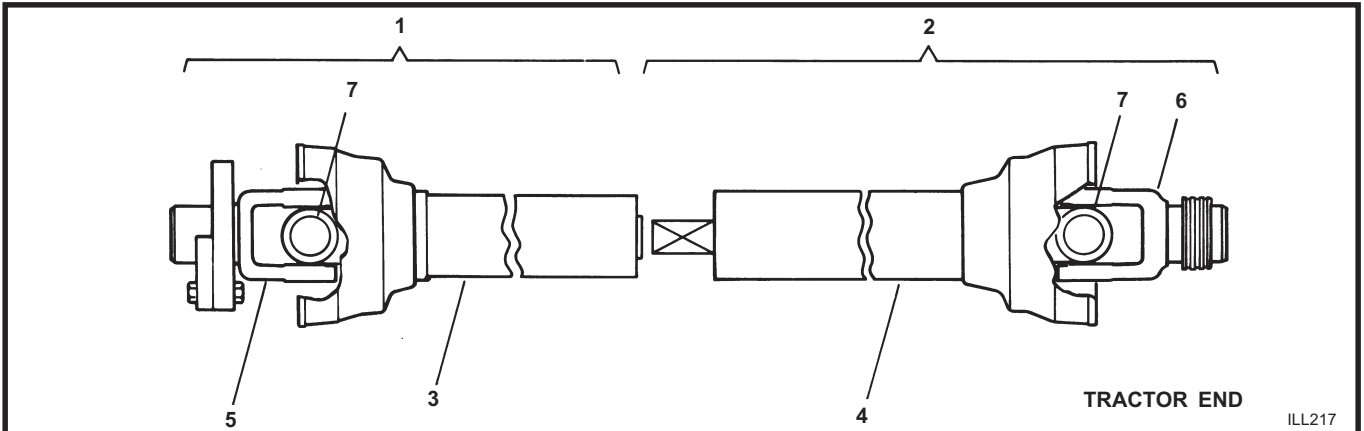
REF. NO.	PART NO.		PARTS DESCRIPTION
	12R	14R	
1	18100	18101	Shear clutch assembly
2	--	--	Not available
3	18473	18459	Repair kit, universal joint
4	18102	18102	Outer plastic shield
5	18474	18474	Nylon bearing, thrust washer, snap ring
6	18103	18103	Inner plastic shield
7	18104	18105	Implement yoke, 1-1/4" bore
8	18106	--	Shearbolt, grade 2
8	--	18107	Shearbolt, grade 5
9	18108	18108	Shear clutch bushing

REF. NO.	PART NO.		PARTS DESCRIPTION
	12R	14R	
10	18109	18110	Shear clutch yoke
11	18112	18113	1/2 PTO shaft, tractor end
12	18114	18115	1/2 PTO shaft, implement end
13	18111	18111	Bearing set, shear clutch

**CHECK CORRECT LENGTH AND MODEL BEFORE ORDERING PARTS.**

12R Series shaft used with TR80 auger  
14R Series shaft used with TR100 auger

# TR - PTO Shaft (Weasler)



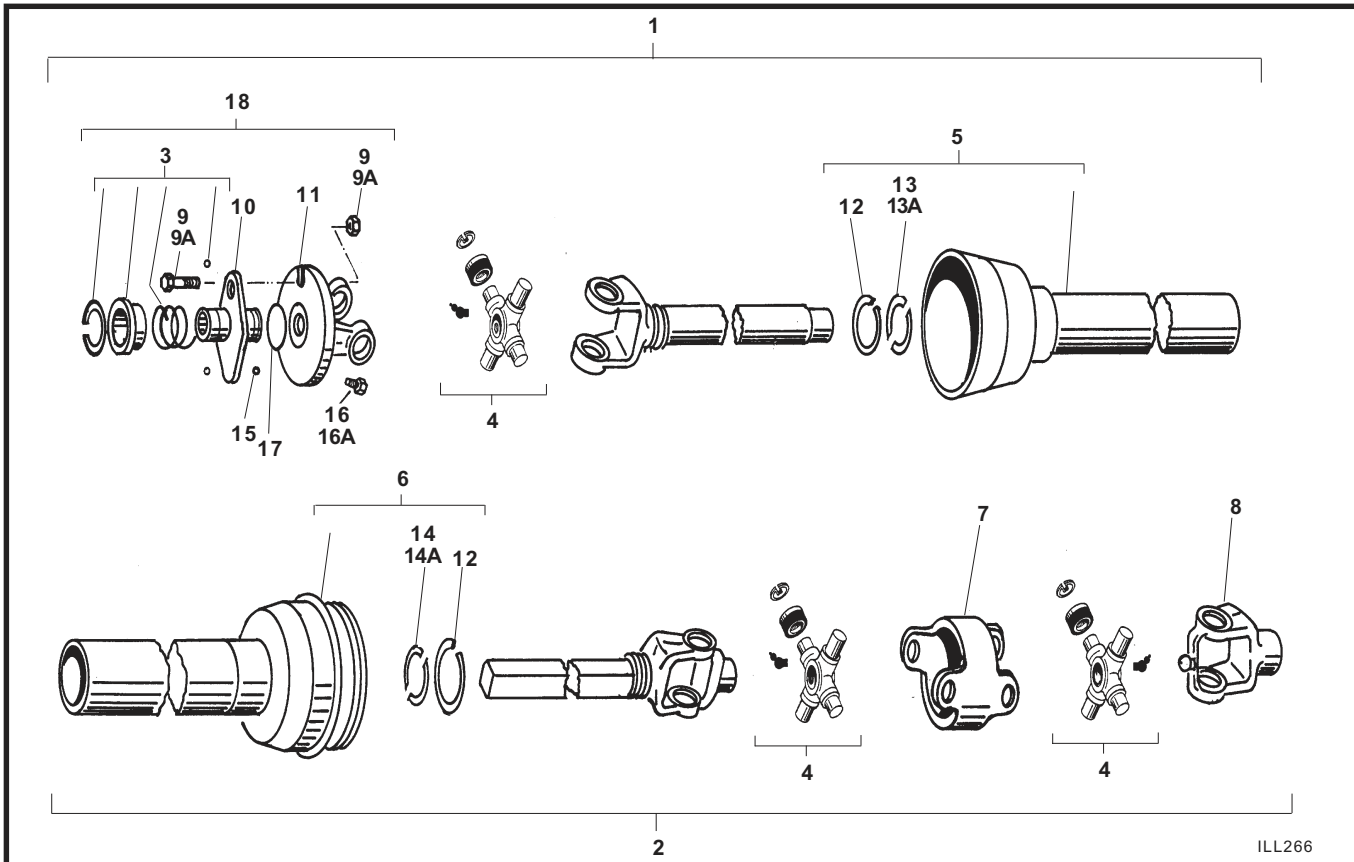
REF. NO.	PART NO.		PARTS DESCRIPTION
	12R	14R	
1	18606	18612	1/2 PTO shaft, implement end
2	18607	18613	1/2 PTO shaft, tractor end
3	18608	18608	Inner plastic shield, c/w retainer ring & nylon bearing
4	18609	18609	Outer plastic shield, c/w retainer ring & nylon bearing
5	18610	--	Implement yoke with shearbolt, 1-1/4" bore
5	--	18611	Implement yoke with shearbolt, 1-1/4" bore
6	18471	18477	Snap hitch yoke
7	18473	18459	Universal joint, repair kit

**CHECK CORRECT LENGTH AND MODEL BEFORE ORDERING PARTS.**



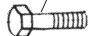
12R Series shaft used with TR80 auger  
14R Series shaft used with TR100 auger

# Constant Velocity PTO - Shaft (Weasler)

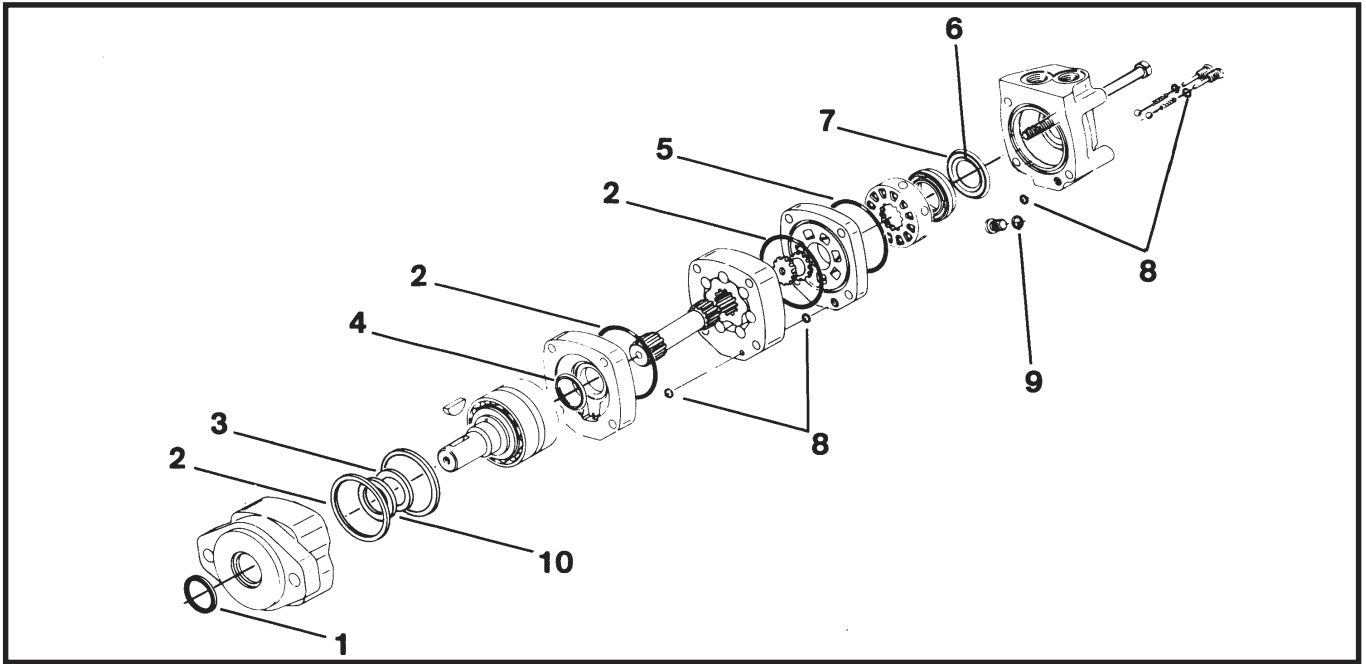
MK80 / MK100 / MK130 - TR80 / TR100



ILL266

REF NO.	PART NO.				PARTS DESCRIPTION
	8"/10"	13"-61 13"-71	13"-81 13"-91 13"-111	10"-81 10"-91	
1	18456	18268	17544	27592	1/2 PTO shaft, tractor end
2	18457	18269	17545	27593	1/2 PTO shaft, implement end
1&2	18484	18455	17542	27481	Complete PTO shaft
3	18458	18270	17546	18270	Spring lock repair kit
4	18459	18271	17547	18271	Universal joint repair kit
5	18460	18272	17548	27596	Plastic shield c/w reference no. 12 & 13, tractor end
6	18461	18273	17549	27595	Plastic shield c/w reference no. 12 & 14, implement end
7	18462	18274	17550	18274	CV centre housing
8	18463	18358	17551	27594	End yoke
9	*see below	--	--	--	Bolt and locknut, 5/16" - 18 x 1", grade 8
9A	--	18454	18454	18454	Bolt and locknut, 3/8" - 16 x 1", grade 8
10	N/A	N/A	N/A	N/A	Shear flange hub
11	N/A	N/A	N/A	N/A	Shear flange yoke
12	18467	18467	--	18467	Retainer ring
13	18468	18469	--	18469	Nylon bearing
13A	--	--	17552	--	Nylon bearing c/w reference no. 12
14	18469	18441	--	18441	Nylon bearing
14A	--	--	17553	--	Nylon bearing c/w reference no. 12
15	18470	18470	18470	18470	Ball bearing kit
16	19995	19995	--	19995	Bolt, 3/8" - 16 x 1/2", grade 5
16A	--	--	19955	--	Bolt, 3/8" - 16 x 1"
17	18485	18485	18485	18485	Blank disc
18	18363	18440	17554	27597	Shear assembly
					*Reference No. 9:
					<b>PART#17125</b> MK80 uses a 5/16" x 1" grade 8 bolt, including nut, through thread shear (as per drawing) 
					<b>PART#17126</b> MK100 uses a 5/16" x 1" grade 8 bolt, including nut, through shank shear (as per drawing) 
					<b>PART#18454</b> MK130 uses 3/8" x 1" grade 8 bolt complete with shear point 

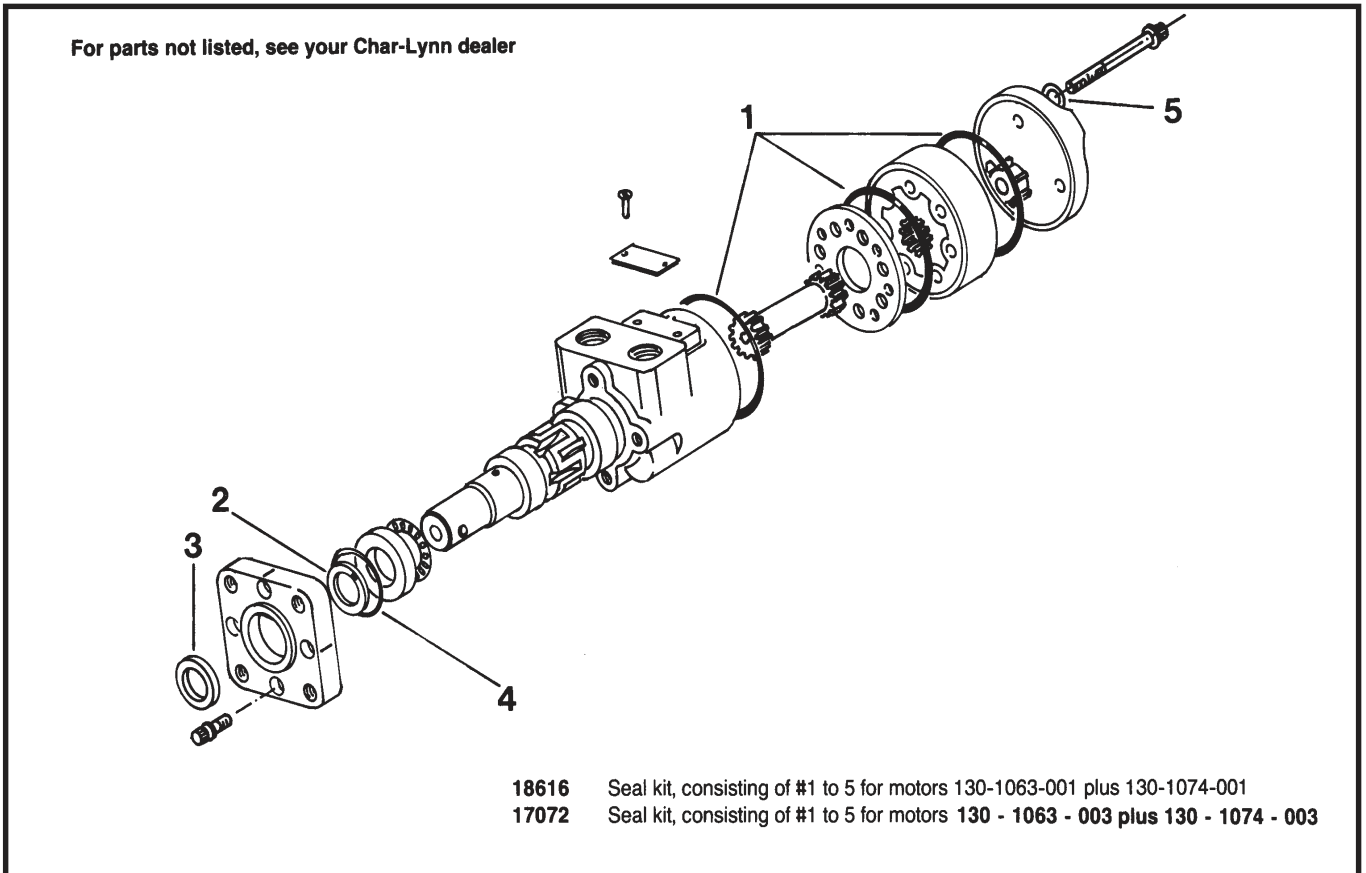
# Hydraulic Motor (Char-Lynn Model 104-1001 & 104-1002)



REF NO.	PART NO.	PARTS DESCRIPTION
1	18614	Seal kit, consisting of # 1 to 10
2	18615	Seal kit, consisting of # 3 to 10

For parts not listed, see your Char-Lynn dealer

# Hydraulic Motor (Char-Lynn Model 130-1063 & 130-1074)



**! DANGER**



**ROTATING FLIGHTING HAZARD**  
Keep away from auger intake.

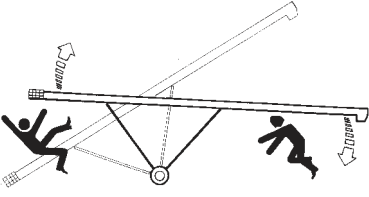
Keep intake shield in place and in good working order. Do not modify.

**FAILURE TO HEED WILL RESULT IN SERIOUS INJURY OR DEATH.**

MADE IN CANADA

17098

**! DANGER**



**UPENDING HAZARD**

Anchor intake end and/or support discharge end to prevent upending.

Auger intake must always have downward weight. Do not release until attached to tow bar or resting on ground.

Do not raise auger intake above tow bar height.

Use a tow vehicle to move auger.

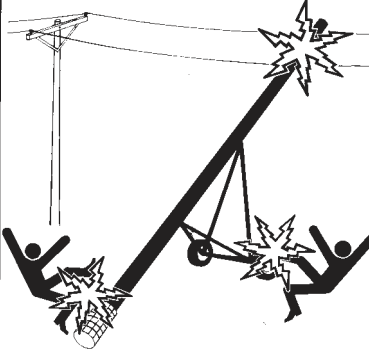
Empty auger and lower fully before moving.

**FAILURE TO HEED WILL RESULT IN SERIOUS INJURY OR DEATH.**

MADE IN CANADA

17097

**! DANGER**



**ELECTROCUTION HAZARD**

This auger is not insulated. Keep away from overhead power lines and devices. Electrocution can occur without direct contact.


Fully lower auger before moving.

**FAILURE TO KEEP AWAY WILL RESULT IN SERIOUS INJURY OR DEATH.**

MADE IN CANADA

17102

**! DANGER**



**ROTATING PTO DRIVELINE HAZARD**

Keep your body, hair, clothing and others away from rotating PTO driveline.

Do not operate auger unless all driveline, tractor and equipment shields are in place and in good working order.

Make certain the driveline shields turn freely on driveline.

Make certain the driveline is securely attached at both ends.

Do not exceed operating speed of 540 RPM.

Keep u-joints angles small and equal. Do not exceed maximum recommended length.

**FAILURE TO HEED WILL RESULT IN SERIOUS INJURY OR DEATH.**

MADE IN CANADA

17103

**! DANGER**



**KEEP CHILDREN AWAY.**

This auger is not a toy.

The work area is not a playground.

Do not allow children to play on or near this auger at any time.

**FAILURE TO HEED WILL CAUSE SERIOUS INJURY OR DEATH.**

MADE IN CANADA

17095

**! DANGER**



**ROTATING FLIGHTING HAZARD**

Keep away from auger intake.

Keep intake shield in place and in good working order. Do not modify.

**FAILURE TO HEED WILL RESULT IN SERIOUS INJURY OR DEATH.**

MADE IN CANADA

17163

**! DANGER**



**ROTATING FLIGHTING INSIDE**

Do not operate auger unless swing-hopper is securely attached to boot.

**FAILURE TO HEED WILL RESULT IN SERIOUS INJURY OR DEATH.**

**IMPORTANT:** Do not operate auger with swing-hopper in transport position. This will damage the u-joint.

MADE IN CANADA

17094

**! DANGER**



**ROTATING DRIVE HAZARD**

Do not operate auger with shield removed.

**FAILURE TO HEED WILL CAUSE SERIOUS INJURY**

MADE IN CANADA

17114

**⚠ DANGER**

**ELECTROCUTION HAZARD**  
 This auger is not insulated.  
 Keep auger away from overhead power lines and devices.  
 Electrocution can occur without direct contact.  
 Fully lower auger before moving.  
**FAILURE TO KEEP AWAY WILL RESULT IN SERIOUS INJURY OR DEATH.**

MADE IN CANADA

17161

**⚠ DANGER**

**ELECTROCUTION HAZARD**  
 This auger is not insulated.  
 Keep auger away from overhead power lines and devices.  
 Electrocution can occur without direct contact.  
 Fully lower auger and truck box before moving.  
**FAILURE TO KEEP AWAY WILL RESULT IN SERIOUS INJURY OR DEATH.**

MADE IN CANADA

17162

**⚠ DANGER**

**ROTATING PTO DRIVELINE HAZARD**  
 Keep your body, hair, clothing and others away from rotating PTO driveline.  
 Do not operate auger unless all driveline, tractor and equipment shields are in place and in good working order.  
 Make certain driveline shields turn freely on driveline.  
 Make certain driveline is securely attached at both ends.  
 Do not exceed operating speed of 540 RPM.  
 Keep u-joint angles small and equal. Do not exceed maximum recommended length.  
**FAILURE TO HEED WILL RESULT IN SERIOUS INJURY OR DEATH.**

MADE IN CANADA

17099

**⚠ DANGER**

**ROTATING FLIGHTING INSIDE**  
 Do not operate auger with clean-out cover removed.  
 To clean out, shut off and lockout power, then remove cover.  
 Use stick or other tool to clean out.  
 Replace cover before restarting.  
**FAILURE TO HEED WILL RESULT IN SERIOUS INJURY OR DEATH.**

MADE IN CANADA

17104

**⚠ DANGER**

**ROTATING PULLEY**  
 Keep body, hair and clothing away from rotating pulleys and belts.  
 Keep all shields in place and in good working order.  
**FAILURE TO DO SO WILL RESULT IN SERIOUS INJURY OR DEATH.**

MADE IN CANADA

17101

**⚠ WARNING**

**DO NOT OPERATE THIS AUGER** unless

1. You are trained to operate it safely.
2. You have read and understand the operator's manual.
3. You know and follow all safe operating procedures and work rules.
4. Children and untrained personnel are removed from work area.

**FAILURE TO FOLLOW SAFETY INSTRUCTIONS IN MANUAL WILL SUBJECT OPERATOR AND OTHERS TO SERIOUS INJURY OR DEATH.**

MADE IN CANADA

17096

**⚠ WARNING**

**ROTATING FLIGHTING INSIDE**  
 Do not operate auger with safety discharge door not in place.  
**FAILURE TO HEED WILL RESULT IN SERIOUS INJURY**

**NOTE:** Should grain overflow through safety discharge door, reduce volume of feed to hopper.

MADE IN CANADA

17111

**⚠ WARNING**

**ROTATING FLIGHTING INSIDE**  
 Do not operate auger with assembly access plates on swing-hopper removed.  
**FAILURE TO HEED WILL RESULT IN SERIOUS INJURY.**

MADE IN CANADA

17112

**⚠ WARNING**

**Lock PTO driveline securely into place before operating auger.**

**FAILURE TO HEED WILL CAUSE SERIOUS INJURY OR DEATH.**

MADE IN CANADA

18971

**⚠ WARNING**

**Securely block truck box hoist if box is raised to install or service hydraulic or electrical lines to prevent unintentional lowering.**

**FAILURE TO HEED WILL RESULT IN SERIOUS INJURY**

MADE IN CANADA

17164

**⚠ CAUTION**

After lowering auger, always turn winch handle clockwise at least two clicks to tighten brake lock.  
 Maintain control of winch handle at all times.  
 Maintain light cable tension when in towing position.  
 Do not put lubrication on brake discs.  
 Check cable before each use. Replace if frayed or damaged.  
 Make certain cable clamps are securely tightened.

MADE IN CANADA

17109

**CAUTION**

1. Read and understand operator's manual before assembling or operating this auger.
2. Do not remove or modify any safety shield or device. Keep in good working order.
3. Clear work area of CHILDREN and untrained personnel before operating or moving auger.
4. Keep body, hair and clothing away from auger intake and all moving parts.
5. Stop auger and lockout power to adjust, service or clean.
6. Support auger securely to prevent upending or upsetting.
7. Stay clear of power lines when positioning, installing or moving auger.
8. Trained personnel must be in attendance when auger is in operation.
9. Electric motors must be grounded. Disconnect power before resetting overloads.
10. If the manual, safety shields or decals are missing or damaged, contact factory or your dealer for replacements.

MADE IN CANADA

17115

**CAUTION**

1. Read and understand operator's manual before assembling or operating this auger.
2. Do not remove or modify any safety shield or device. Keep in good working order.
3. Clear work area of CHILDREN and untrained personnel before operating or moving auger.
4. Keep body, hair and clothing away from auger intake and all moving parts.
5. Stop auger and lockout power to adjust, service or clean.
6. Fully lower auger to move or service. Use safety chain to transport.
7. Stay clear of power lines when positioning or moving auger. Once positioned, chock all wheels.
8. Trained personnel must be in attendance when auger is in operation.
9. Disassembling certain components will allow auger to collapse. Support auger tube to prevent this.
10. Electric motors must be grounded. Disconnect power before resetting overloads.
11. If the manual, safety shields or decals are missing or damaged, contact factory or your dealer for replacements.

MADE IN CANADA

17113

**WARNING**



**ESCAPING HYDRAULIC OIL** under pressure will cause serious injury if it penetrates the skin. See a doctor immediately if injured.

Relieve pressure before disconnecting hydraulic line.

Use cardboard as a backstop when searching for leaks. Wear proper hand and eye protection.

Inspect frequently. Keep in good repair.

**FAILURE TO HEED WILL CAUSE SERIOUS INJURY.**

MADE IN CANADA

17100

**CAUTION**

The transport position on this swivel arc kit is designed for moving auger on yard only. **DO NOT EXCEED 10 M.P.H.**  
To change wheel position, use sturdy jack under axle. Chock other wheel. Retighten all bolts.

MADE IN CANADA

17106

**CAUTION**

Close valve in lift cylinder hydraulic line after having raised auger into position.

MADE IN CANADA

17107

**CAUTION**

Do not exceed operating speed of 540 RPM.

MADE IN CANADA

17110

**WARNING**

**ROTATING CABLE SHEAVES**

Keep away from rotating cable sheaves and cables.

Do not touch or grab cable while auger is being raised or lowered.

**FAILURE TO HEED WILL RESULT IN SERIOUS INJURY.**

MADE IN CANADA

17105

**IMPORTANT!**

LUBRICATE ANGLE DRIVE WITH HIGH TEMP GREASE

17093

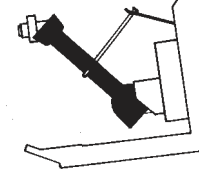
**IMPORTANT !**

**WHEELS MUST BE FREE TO MOVE WHEN RAISING OR LOWERING AUGER**

MADE IN CANADA 19960

19960

**IMPORTANT**



Disconnect PTO driveline from tractor to position or transport auger OR driveline will bottom out severely damaging the CV u-joint and lower flight shaft. See manual for maintenance.

MADE IN CANADA

18859



18118

**WARNING**

Inspect lift cable frequently. If damaged, replace immediately.

Make certain cable clamps are securely tightened.

**FAILURE TO HEED WILL CAUSE SERIOUS INJURY OR DEATH.**

MADE IN CANADA

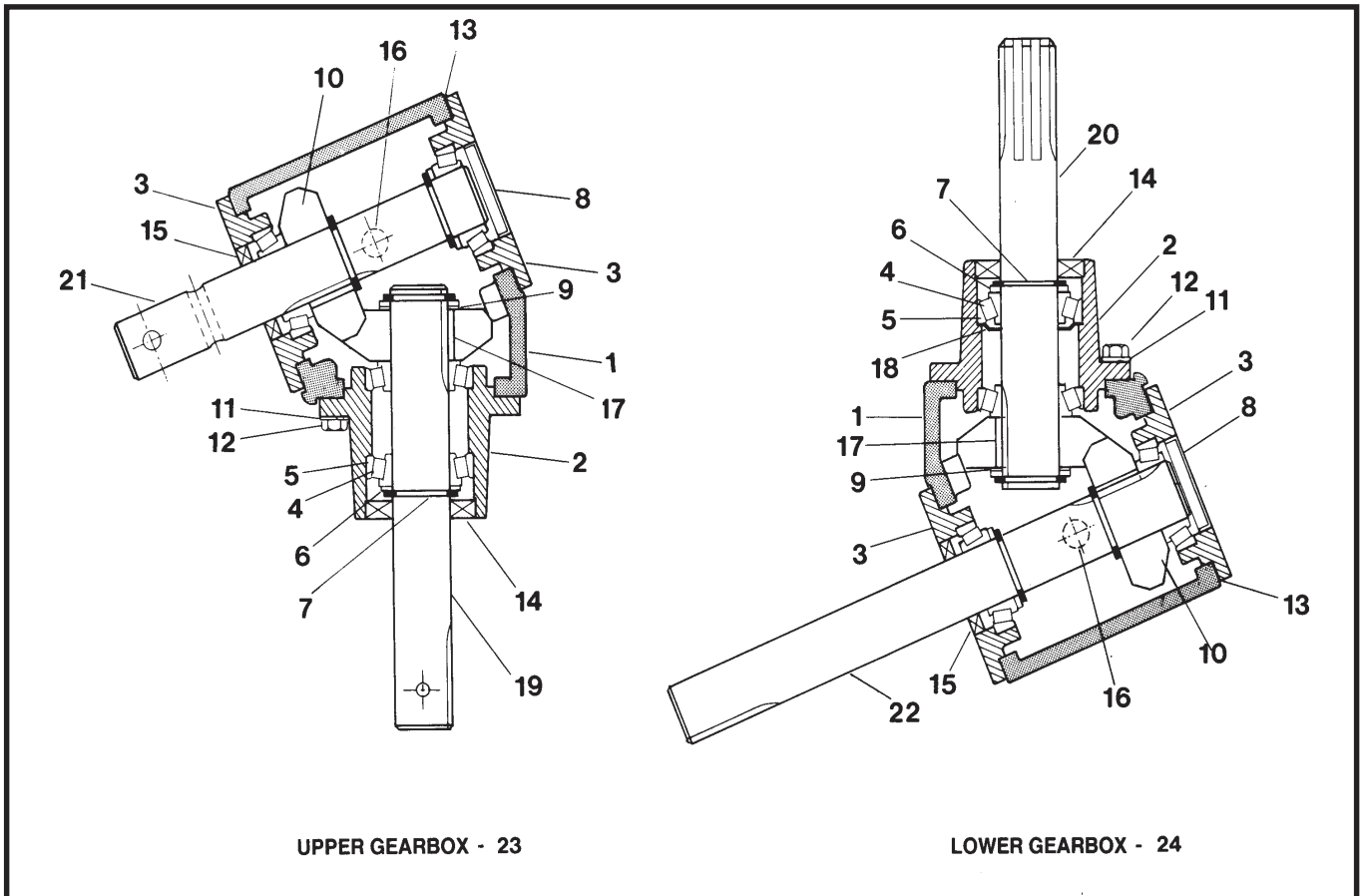
17108

**IMPORTANT!**

LUBRICATE BELT RELEASE AND MOTOR MOUNT SLIDERS WITH SILICONE OR LIGHT OIL.

18679

# MK Gearboxes

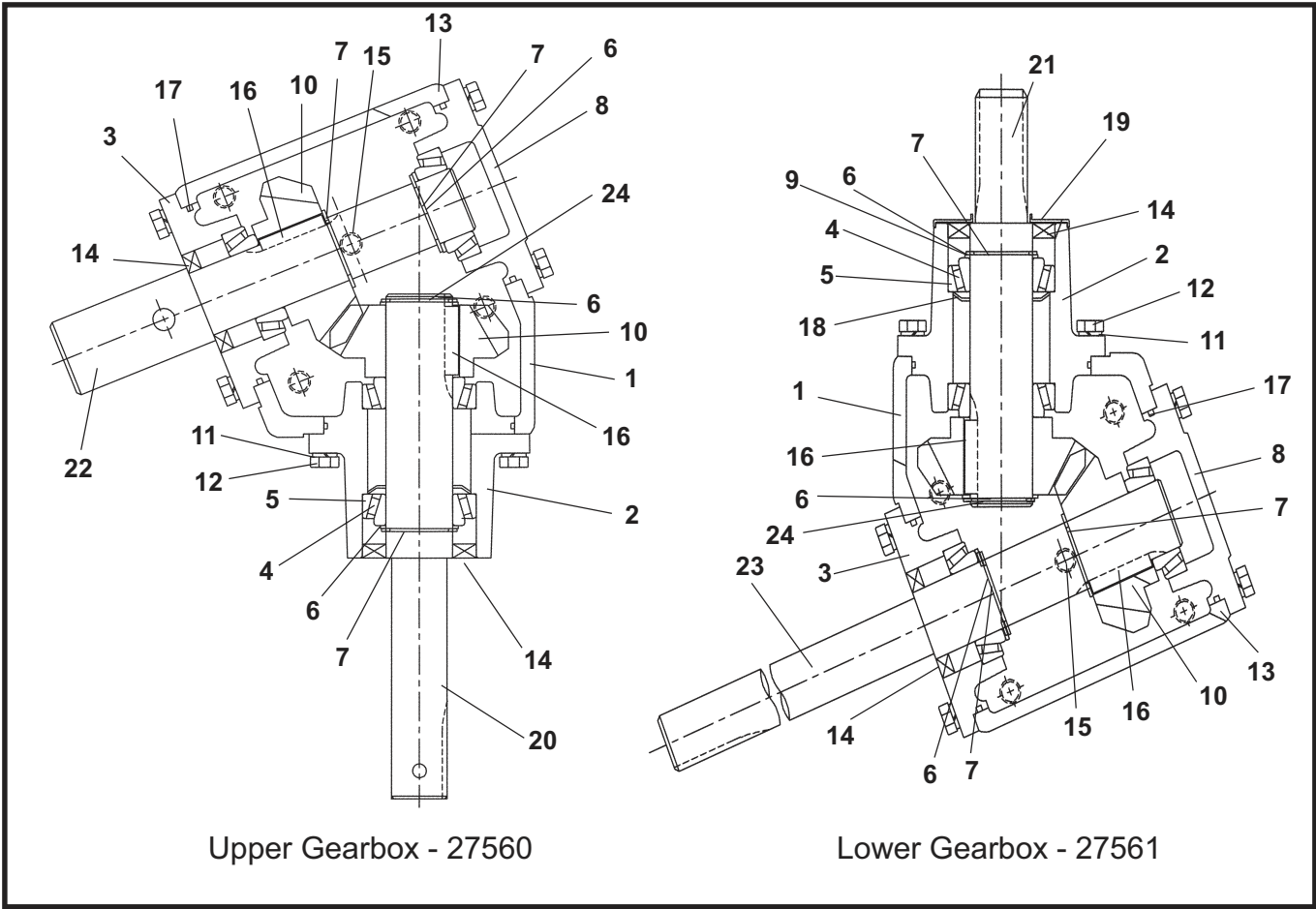


UPPER GEARBOX - 23

LOWER GEARBOX - 24

REF. NO.	PART NO.			PARTS DESCRIPTION
	MK80	MK100	MK130	
1	18959	18959	18959	Housing
2	18960	18960	18960	Quill
3	18961	18961	18961	End cap
4	19265	19265	19265	Bearing cone Timken # LM 67048
5	19266	19266	19266	Bearing cup Timken # LM 67010
6	18426	18426	18426	Spacer
7	18962	18962	18962	Snap ring
8	18963	18963	18963	Expansion plug
9	18411	18411	18411	.007Shim(1.25" I.D.)
10	18964	18964	18964	Gear
11	19603	19603	19603	Lockwasher, 5/16"
12	19538	19538	19538	Cap screw, 5/16" - 18 x 3/4"
13	18390	18390	18390	.005 Shim
14	18427	18427	18427	Seal, National # 471808, CR# 12614
15	18403	18403	18403	Seal, National # 470163, CR# 12458
16	18393	18393	18393	1/4 NPT Pipe plug
17	18380	18380	18380	Square Key
18	18965	18965	18965	Grease washer, lower gearbox only
19	18966	18967	18968	Pinion shaft, upper gearbox only
20	18969	18970	18970	Pinion shaft, lower gearbox only
21	18972	18972	18973	Cross shaft, upper gearbox only
22	18974	18975	18976	Cross shaft, lower gearbox only
23	18848	18849	18789	Upper gearbox, complete
24	18850	18851	18790	Lower Gear Box, complete

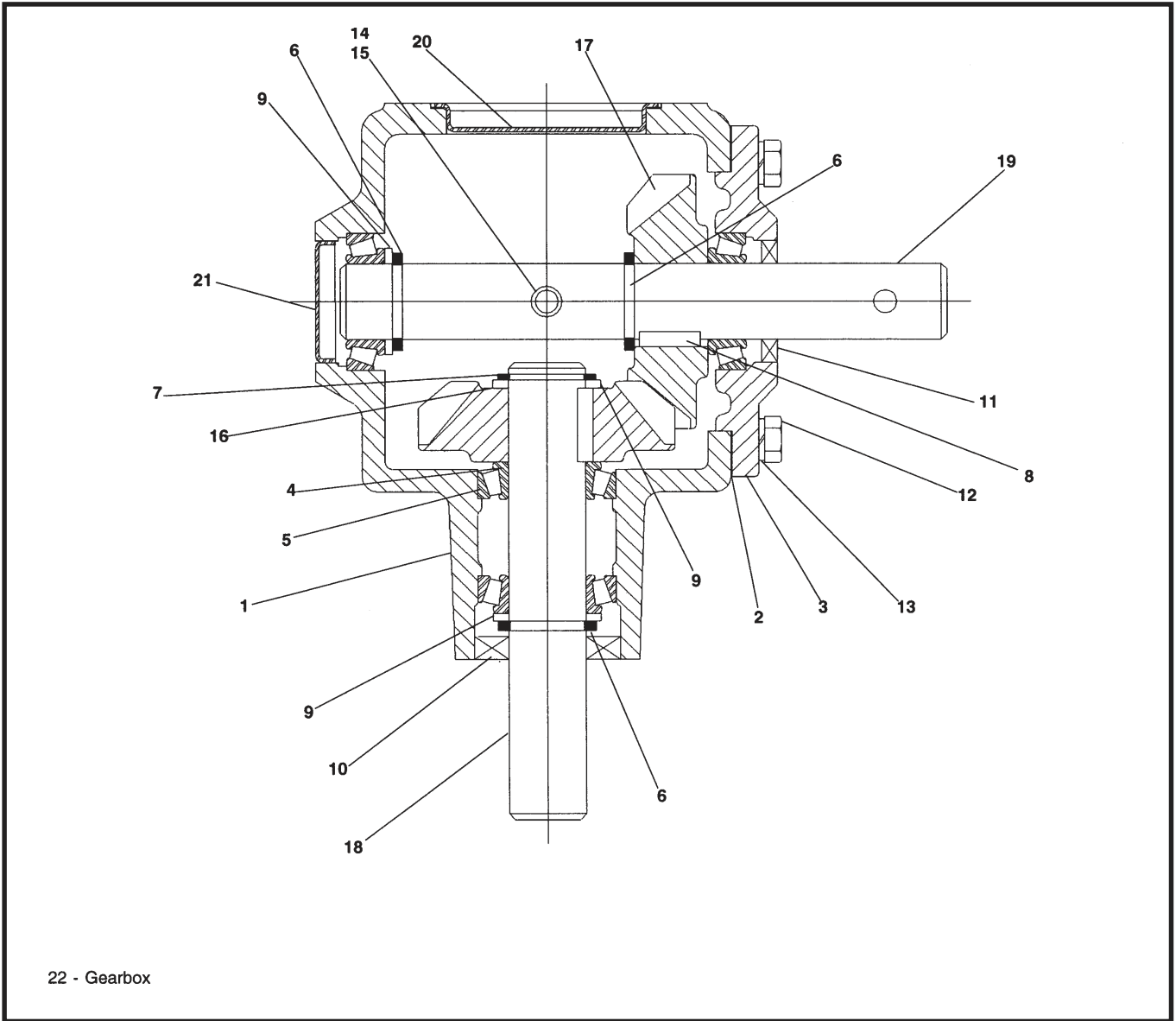
# MK 130 PLUS Gearboxes



REF. NO.	PART NO.	PARTS DESCRIPTION	NO. REQ'D
1	27690	Housing	
2	27691	Quill	
3	27692	End Cap	
4	27693	Bearing Cone, LM29748	
5	17008	Bearing Cup, LM29710	
6	27694	Spacer	
7	27789	Retainer	
8	27695	End Cap	
9	27696	Shim	
10	27697	Gear	
11	19603	Lockwasher, 5/16"	
12	19538	Capscrew, 5/16" UNC x 3/4"	
13	27698	Shim	
14	27699	Seal, 38.1 x 65.1 x 8	
15	18393	Pipe Plug, 1/4" NPT (1/4" HEX)	
16	27700	Square key, 5/16" x 1-1/2" LG.	
17	27701	O-Ring, 105 x 3.1mm	
18	27707	Grease Washer, lower gearbox only	
19	27702	Deflector Shield, lower gearbox only	
20	27703	Pinion Shaft, upper gearbox only	
21	27704	Pinion Shaft, lower gearbox only	
22	27705	Cross Shaft, upper gearbox only	
23	27706	Cross Shaft, lower gearbox only	
24	27708	Snap Ring, 1-1/2"	



# Gearbox Model 2103 (Prairie)

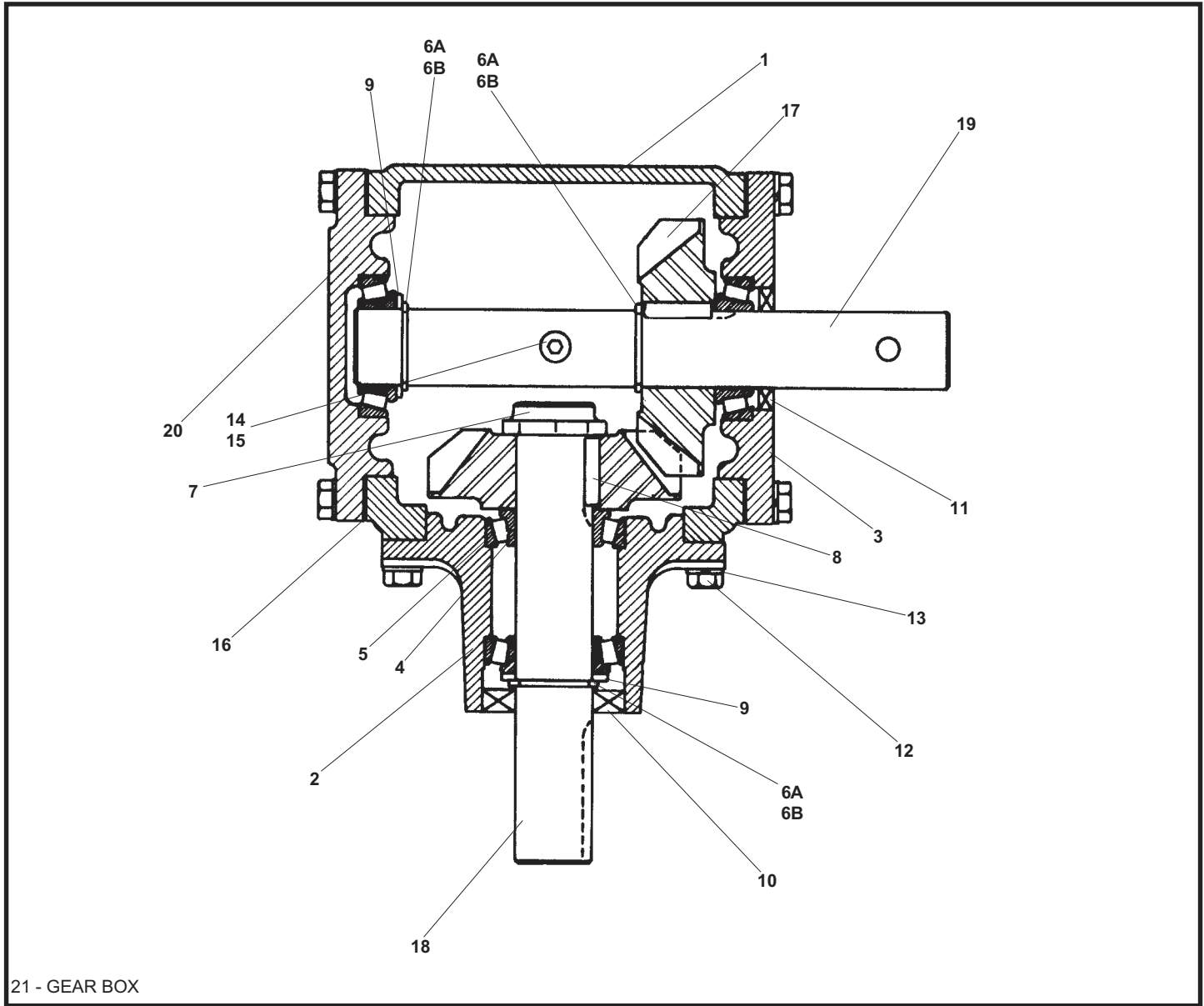


22 - Gearbox

REF. NO.	PART NO.	PARTS DESCRIPTION	NO. REQ'D
1	17173	Housing	1
2	18553	Gasket / shim (0.005")	A/R
3	18423	Bearing cap	1
4	19265	Bearing cone, Timken # LM67048	4
5	19266	Bearing cup, Timken # LM67010	4
6	18405	Retainer, wide (0.159")	3
7	18962	Retainer, narrow (0.095")	1
8	18425	Sq. key, 1/4" x 1-1/8"	2
9	18426	Spacer	2
10	18427	Seal, CR# 12614	1
11	18403	Seal, CR # 12458 or national # 470163	1

REF. NO.	PART NO.	PARTS DESCRIPTION	NO. REQ'D
12	19955	Bolt, 3/8" - 16 x 1" lg.	4
13	19604	Lock washer, 3/8"	4
14	18393	1/4" Pipe plug, solid	1
15	18394	1/4" Pipe plug, vented	1
16	18411	Shim	A/R
17	18428	Gear	2
18	17175	Pinion shaft	1
19	17176	Cross shaft	1
20	17177	Cover, stamping	1
21	18963	Exp. plug	1
22	19585	Gear box complete	1

# Gear Box model CH585

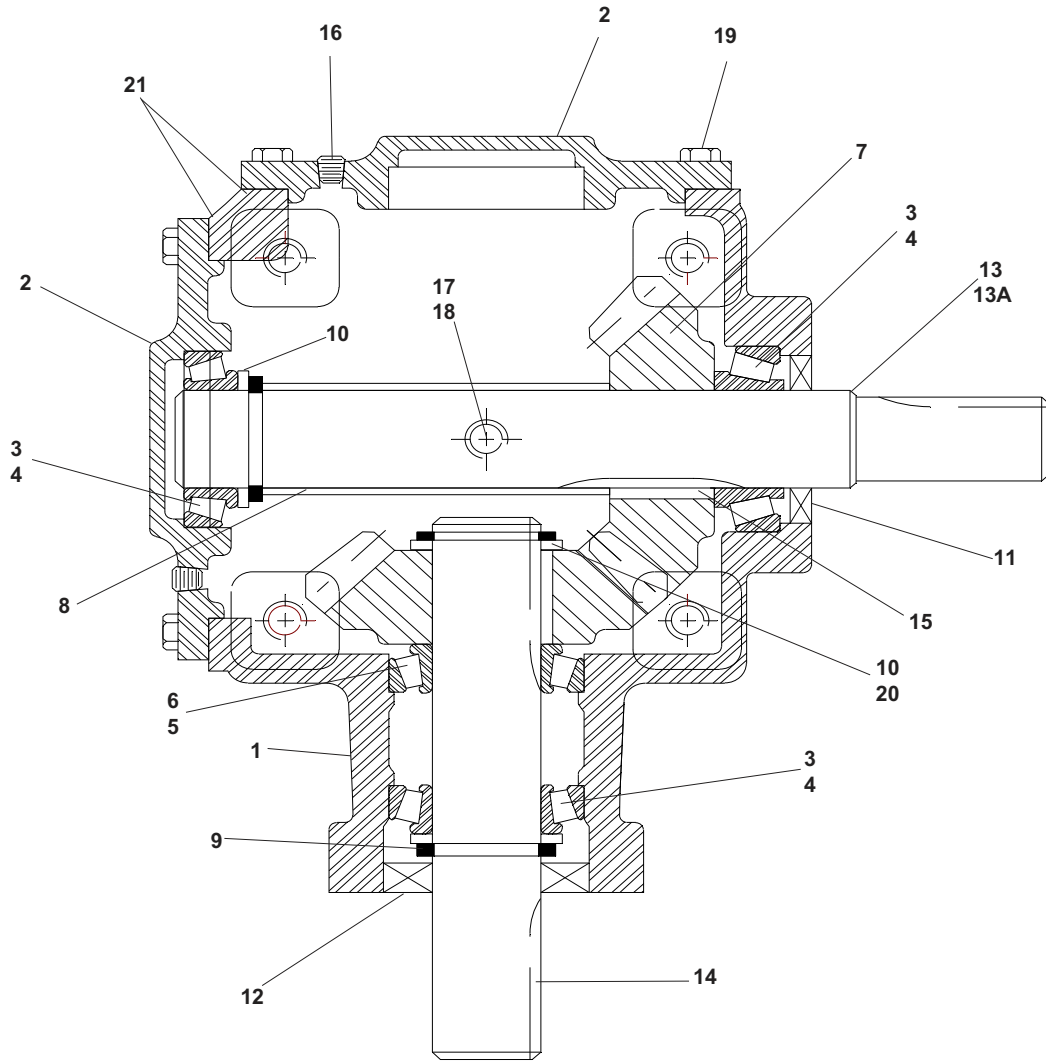


21 - GEAR BOX

REF. NO.	PART NO.	PARTS DESCRIPTION	NO. REQ'D
1	18421	Housing	1
2	18422	Pinion housing	1
3	18423	Bearing cap	1
4	19265	Bearing cone, Timken # LM67048	4
5	19266	Bearing cup, Timken # LM67010	4
6A	18962	Retainer, narrow (0.095")	3
6B	18405	Retainer, wide (0.159")	3
7	18424	Stake nut	1
8	18425	Sq. key 1/4" x 1-1/8"	2
9	18426	Spacer	2
10	18427	Seal, CR # 12614	1
11	18403	Seal, CR # 12458 or national # 470163	1
12	19955	Bolt, 3/8" - 16 x 1", grade 2	12

REF. NO.	PART NO.	PARTS DESCRIPTION	NO. REQ'D
13	19604	Lockwasher, 3/8"	12
14	18393	1/4" Pipe plug, solid	1
15	18394	1/4" Pipe plug, vented	1
16	18553	Gasket / shim (0.005")	A/R
17	18428	Gear	2
18	18429	Pinion shaft	1
19	17176	Cross shaft	1
20	17178	Bearing cap (may be serviced with 18423 & 18963)	1
21	19585	Gearbox, complete	

# Gear Box Model 2306 (Prairie)

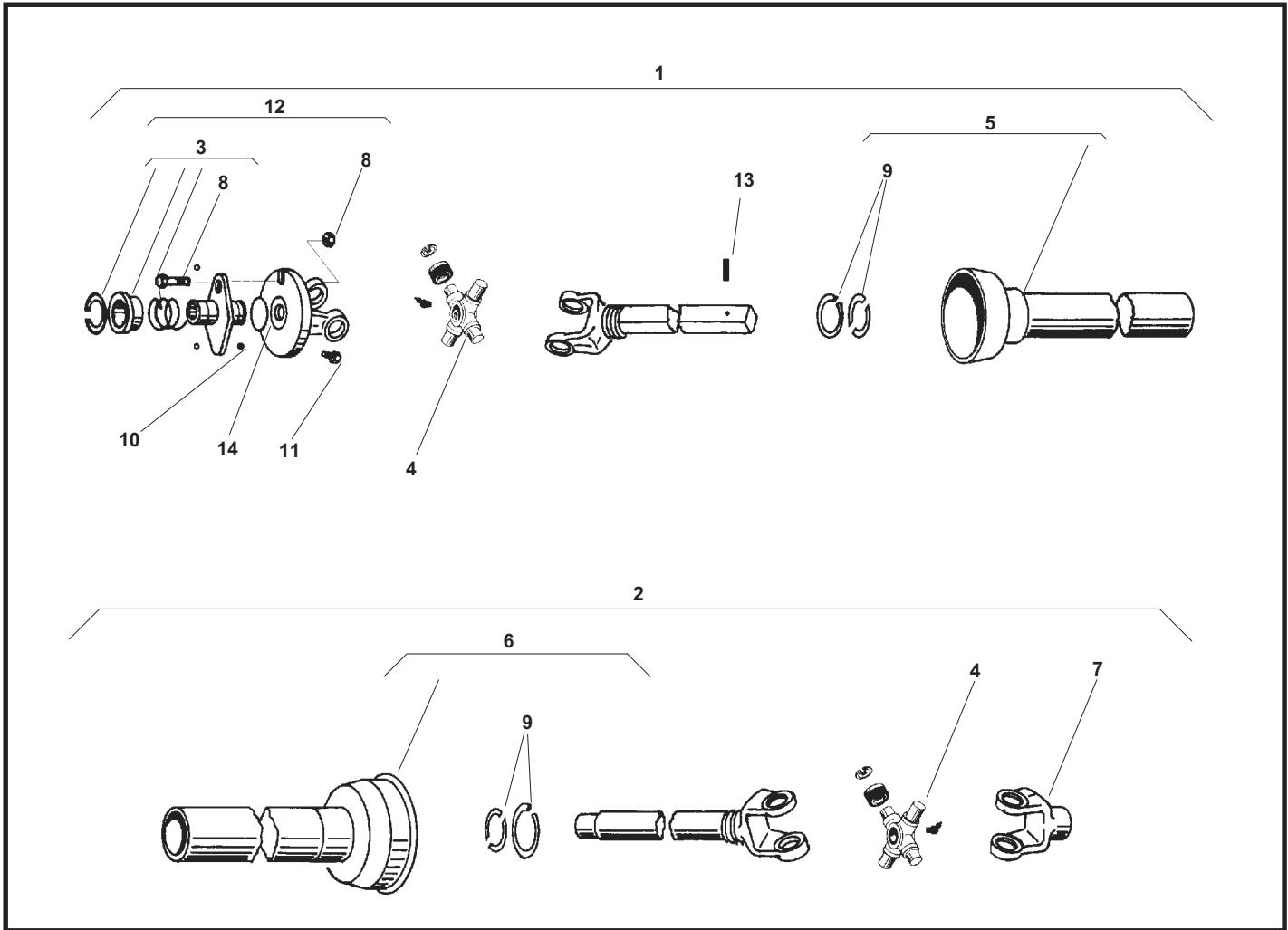


22 - GEAR BOX

REF. NO.	PART NO.	PARTS DESCRIPTION	NO. REQ'D
1	17321	Housing	1
2	17322	Cover	2
3	17323	Bearing cone, Timken #25580	3
4	17324	Bearing cup, Timken #25520	3
5	17325	Bearing cone, Timken #3782	1
6	17326	Bearing cup, Timken #3730	1
7	17327	Gear	2
8	17328	Spacer	1
9	17329	Snap ring	3
10	17330	Washer	3
11	17331	Oil seal, CR #17678	1

REF. NO.	PART NO.	PARTS DESCRIPTION	NO. REQ'D
12	17332	Oil seal	1
13	17333	Cross shaft (machined to 1-1/2")	1
13A	17639	Cross shaft (full length 1-3/4")	1
14	17334	Pinion shaft	1
15	17335	Key	2
16	18393	1/4" Pipe plug, solid	2
17	18414	1/2" Pipe plug, solid	1
18	18413	1/2" Pipe plug, vent	1
19	19955	Bolt, 3/8" -16 x 1", grade 2	16
20	17336	Shim, .007, shaft	A.R.
21	17337	Shim, .007, cover	A.R.
22	17250	Gear box, complete	X

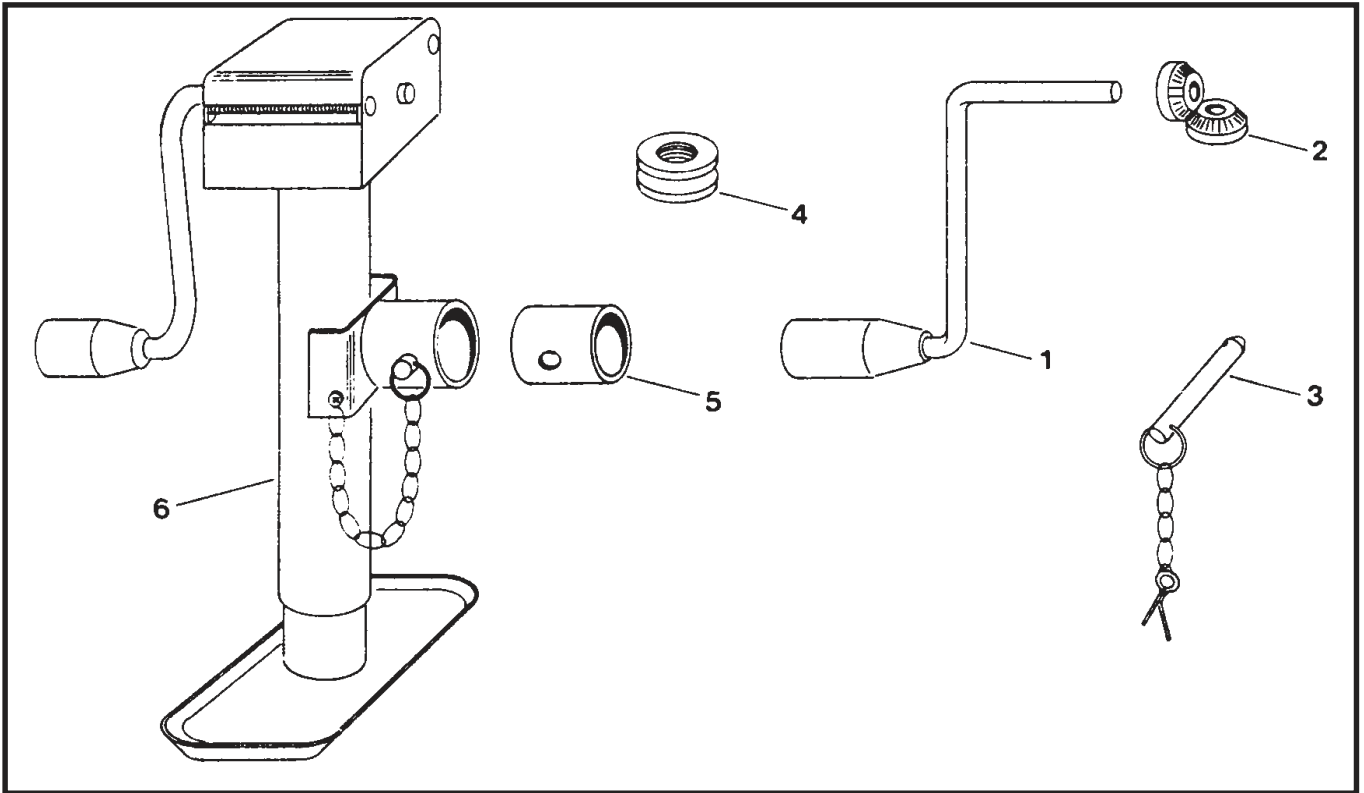
# PTO - Driveline 35R series (Weasler)



REF. NO.	PART NO.	PARTS DESCRIPTION
1	17315	1/2 PTO driveline, tractor end
2	17316	1/2 PTO driveline, implement end
1&2	17260	Complete PTO driveline
3	18270	Spring lock repair kit
4	18271	Universal joint repair kit
5	17317	Outer guard c/w Ref. #9
6	17318	Inner guard c/w Ref. #9
7	17319	End yoke

REF. NO.	PART NO.	PARTS DESCRIPTION
8	18454	Bolt & locknut, 3/8" - 16 x 1", grade 8
9	17320	Nylon retainer kit
10	18470	Ball bearing kit
11	19995	Bolt, 3/8" - 16 x 1/2", grade 5
12	18440	Shear assembly
13	18593	Roll pin, 1/4" x 1"
14	18485	Blank disc

# Sidewinder Jack



REF. NO.	PART NO.			PARTS DESCRIPTION
	FULTON	RAM	CROWN	
1	18538	18534	18373	Crank assembly kit
2	18539	18535	18375	Beveled gear kit
3	18374	18374	18374	Pin & chain kit
4	—	—	—	Not available
5	18116	18116	18116	Pipe mount, weld on
6	18080	18080	18080	Jack, side winder