

**WC1335 AND
WC15 SERIES CONVEYORS
TUBE / UNDERCARRIAGE / DRIVE**

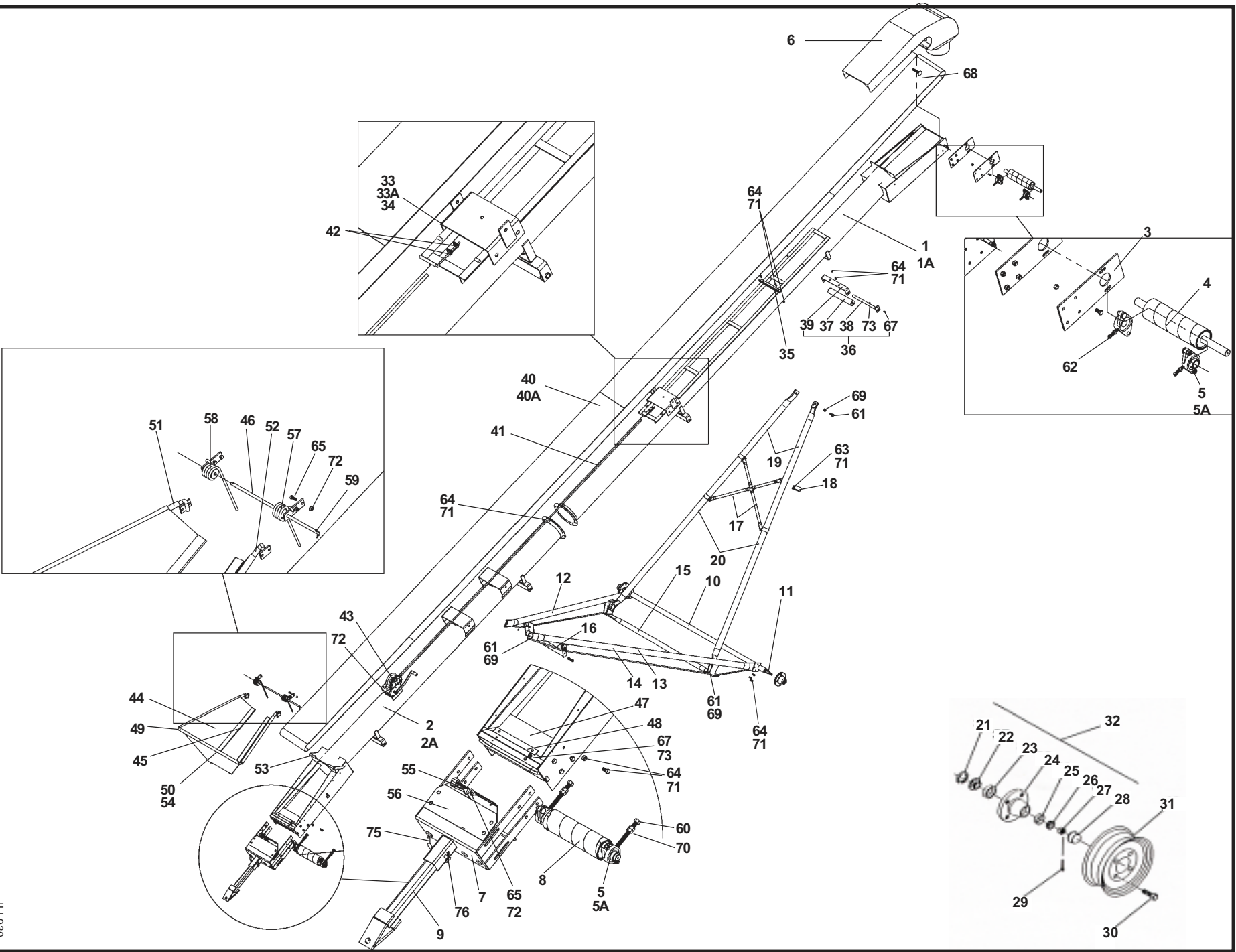
<u>Description</u>	<u>Page</u>
WC1335 basic conveyor	K2-3
WC1515 basic transfer	K4-5
WC1570 basic tube	K6-7
WC1580 basic tube	K8-9
WC1590 basic tube	K10-11
WC1570 - WC1580 - WC1590 basic frame	K12-13
WC13 EMD drive components	K14
WC13 Hydraulic drive components	K15
WC1570 - WC1580 - WC1590 EMD drive components	K16
WC1570 - WC1580 - WC1590 PTO drive components	K17
WC1515 EMD drive components	K18
WC1515 Hydraulic drive components	K19

Westfield RED PAINT Spray can..... Part No. 19885
 Westfield YELLOW PAINT Spray can..... Part No. 19886

WC1335 AND WC15
 SERIES CONVEYORS
 DRIVE/TUBE/UNDERCARRIAGE

K

WC1335 Basic Conveyor



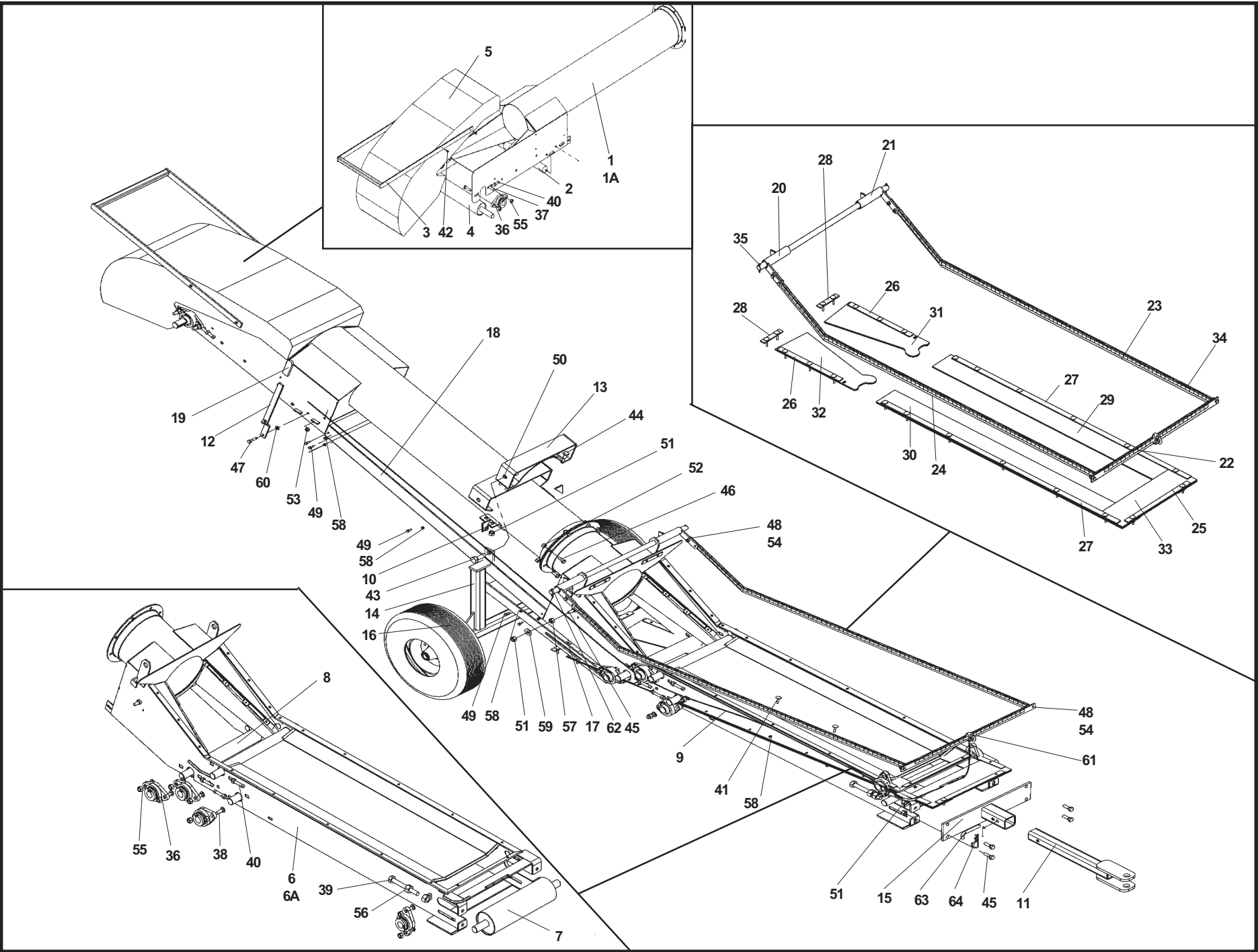
K2

Jan-05

ILL930

REF. NO.	PART NO.	PART DESCRIPTION	NO. REQD
1	27243	Upper tube section	1
1A	27244	Upper tube assembly, as shipped	1
2	27240	Lower tube section	1
2A	27241	Lower tube assembly, as shipped	1
3	27254	Top bearing plate	2
4	27248	Top roller	1
5	27246	1-1/4" bearing, w/2-bolt flange	4
5A	18852	1-1/4" bearing, less flange	4
6	27253	Discharge hood (plastic)	1
7	27245	Skid plate, WC13	1
8	27247	Bottom roller	1
9	27284	WC13 Hitch tube	1
10	19338	Axle w/spindles, nuts, cotter pins	4
11	19262	Spindle, weld-on	1
12	19350	WR41 Lower reach tube, left	1
13	19351	WR41 Lower reach tube, right	1
14	19365	WR41 Lower reach frame bundle, as shipped	1
15	27259	Crossmember	1
16	27257	Short crossmember	1
17	27263	Upper frame cross brace	2
18	27242	2-1/2" Circular clamp	4
19	19383	WR41 Upper lift tube, left or right, single	2
20	27282	Upper frame bundle, as shipped, includes Ref. No. 15	1
21	19264	Seal	1
22	19265	Large bearing, Timken #LM 67048	2
23	19266	Large cup, Timken #LM 67010	2
24	19267	Hub w/cups	2
25	19268	Small cup, Timken #LM 11910	2
26	19269	Small bearing, Timken #LM 11949	2
27	19270	Slotted nut, 3/4" - 16	2
28	19272	Dust cap	2
29	19271	Cotter pin, 1/8" x 1-1/2"	2
30	19273	Wheel bolt, 1/2" - 20 x 1"	8
31	19261	15" Wheel, 4 bolt	2
32	19467	Hub assembly, complete	2
33	27250	Trackshoe, less rollers	1
33A	27251	Trackshoe, as shipped	1
34	27255	Trackshoe roller	1
35	27258	Trackstop	1
36	27459	Return roller, as shipped	4
37	27256	Return roller only	4
38	27457	Return roller axle	4

REF. NO.	PART NO.	PART DESCRIPTION	NO. REQD
39	27458	Return roller mount	4
40	27273	WC1335 slit chevron belting (c/w lacing, pin & washers)	1
40A	17995	WC13 belt lacing kit (c/w lacing, pin & washers)	-
41	18823	1/4" Lift cable, 38' long	1
42	19147	1/4" Cable clamp	2
43	19152	Winch, 5:1 ratio	1
44	27274	Hopper canvas, Vintex vinyl	1
45	27260	Canvas hold-down bar	1
46	27261	Hopper hinge rod	2
47	27262	Hopper rubber seal	1
48	17358	Attach strap, 10-1/2"	1
49	27210	Bent corner rod	1
50	27266	Hopper back tube	2
51	27264	Canvas hopper frame, LH	2
52	27265	Canvas hopper frame, RH	1
53	27204	Pivoting collar	2
54	27267	Hopper plastic guard	1
55	27283	Hopper hook	3
56	27280	Intake guard plate	1
57	27237	Hopper spring LH	1
58	27238	Hopper spring RH	1
59	18155	Cotter pin, 3/16" x 1-1/4"	2
60	27249	Adjust bolt, 5/8" - 11 x 5-1/2"	2
61	19590	Bolt, 5/8" - 11 x 1-1/2", grade 5	6
62	17819	Setscrew, 7/16" - 14 x 2", grade 8	2
63	18698	Bolt, 7/16" - 14 x 1-1/4", grade 5	5
64	19542	Bolt, 7/16" - 14 x 1", grade 5	28
65	18955	Bolt, 3/8" - 16 x 1", grade 5	5
66	18042	Bolt, 5/16" - 18 x 1", grade 5	2
67	19538	Bolt, 5/16" - 18 x 3/4", grade 2	4
68	19274	Selftapping screw, #14 x 5/8" w/washerhead	14
69	19600	Locknut, 5/8" - 11	6
70	19864	Hex Nut, 5/8" - 11	2
71	19598	Locknut, 7/16" - 14	33
72	19596	Washer locknut, 3/8" - 16	8
73	19595	Washer locknut, 5/16" - 18	2
74	27336	Flat washer, 5/16"	12
75	19648	Saddle pin	1
76	19463	Hair pin	1
--	27269	WC 1335 Decal	1
--	27277	WC1335 Basic Crate	1



Jan-05

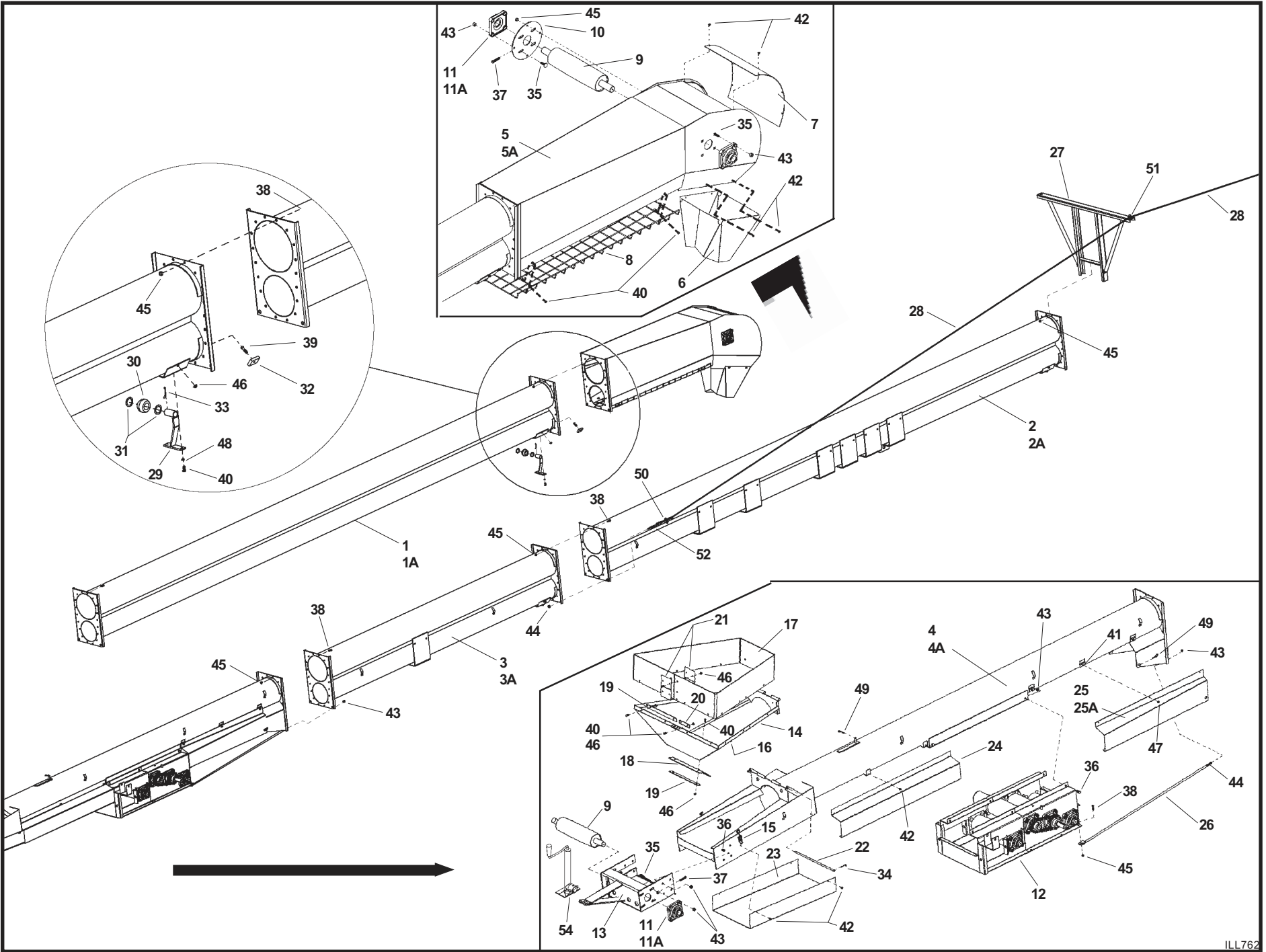
REF. NO.	PART NO.	PART DESCRIPTION	NO. REQ'D
1	27343	Transfer spout tube	1
1A	27226	Transfer spout tube bundle	1
2	27366	Roller 15 - 1/8" X 1-3/4"	1
3	27362	Transfer spout handle	1
4	27365	Spout drive roller	1
5	27364	15" Series transfer hood	1
6	27346	Transfer hopper tube	1
6A	27225	Transfer hopper tube bundle	1
7	27347	Takeup roller	1
8	27348	Transition roller	3
9	27388	1/8" Cable, 13' 8" long	1
10	27370	3" U Clamp	1
11	27367	Straight tongue	1
12	27389	Hopper handle	1
13	27371	Suspension bracket	1
14	27372	Transfer frame	1
15	27368	Transfer hitch	1
16	27373	5.7 X 8 Tire	2
17	27369	Transfer wheel adjust	2
18	27099	1515 Windguard	2
19	27390	Rubber handle cover 1/4" X 1"	1
20	27392	Hopper pivot shaft, right	1
21	27391	Hopper pivot shaft, left	1
22	27357	Trans upper cloth flat	1
23	27344	Upper cloth arm-LH	1
24	27345	Upper cloth arm-RH	1
25	27358	Cloth mount cross	1
26	27360	Cloth mount upper side	2
27	27359	Cloth mount side	2
28	27361	Cloth mount top	2
29	27353	Flashing - left side	1
30	27354	Flashing - right side	1
31	27351	Flashing - left back	1
32	27352	Flashing - right back	1
33	27355	Flashing - front	1
34	27374	Trimlock	1
35	27363	Pivot shaft rod	1
36	27246	1-1/4" Bearing + flange	10
37	27387	Carriage bolt, 1/2" X 2"	4
38	17807	Carriage bolt, 1/2" X 1-1/2"	16
39	27350	Bolt tap, 3/4" X 5"	2
40	27349	SQ HD Setscrew, 7/16" X 2-1/2"	8

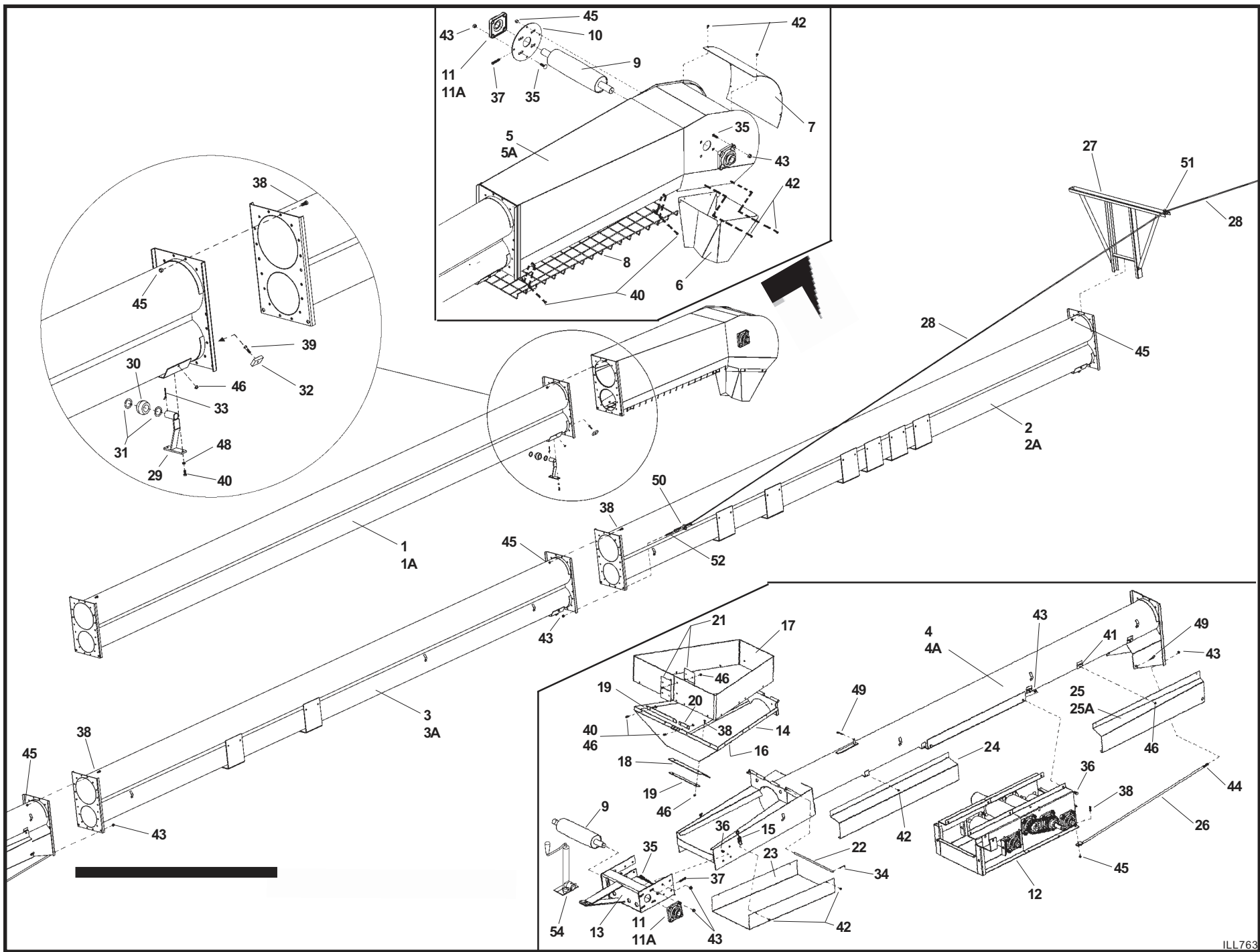
K5

REF. NO.	PART NO.	PART DESCRIPTION	NO. REQ'D
41	27379	Elevator bolt, 1/4" X 1-1/4"	20
42	27382	Teks, 1"	4
43	19592	Bolt, 3/4" - 10 X 2", grade 5	2
44	27380	Bolt, 1/2" - 13 X 2-1/2", grade 5	4
45	19589	Bolt, 1/2" - 13 X 1-1/2", grade 5	6
46	19542	Bolt, 7/16" - 14 X 1", grade 5	8
47	27378	Bolt, 3/8" - 16 X 1-1/2", grade 5	1
48	18091	Bolt, 5/16" - 18 X 1", grade 2	6
49	27377	Bolt, 1/4" - 20 X 3/4", grade 5	7
50	19601	Nylon locknut, 3/4" - 10	2
51	19599	Nylon locknut, 1/2" - 13	12
52	19598	Nylon locknut, 7/16" - 14	8
53	17402	Nylon locknut, 3/8" - 16	1
54	19980	Nylon locknut, 5/16" - 18	6
55	19599	Nylon locknut, 1/2" - 13	20
56	19997	Hex nut, 3/4" - 10	2
57	19602	Hex nut, 1/2" - 13	2
58	27381	Hex nut, 1/4" - 20	27
59	17401	Flat washer, 1/2"	2
60	27386	Nylon washer, 3/8"	1
61	27385	Cable clamp, 1/8"	2
62	27384	Cotter pin, 5/32" X 1-1/2"	2
63	19648	Pin hitch, 1/2" X 3"	1
64	19463	Hair pin	1
65	27393	Left spring (not shown in the drawing)	1
66	27394	Right spring (not shown in the drawing)	1
	27375	Belt	1
	17995	Belt lacing kit (c/w lacing, pin & washers)	

WC1515 Transfer

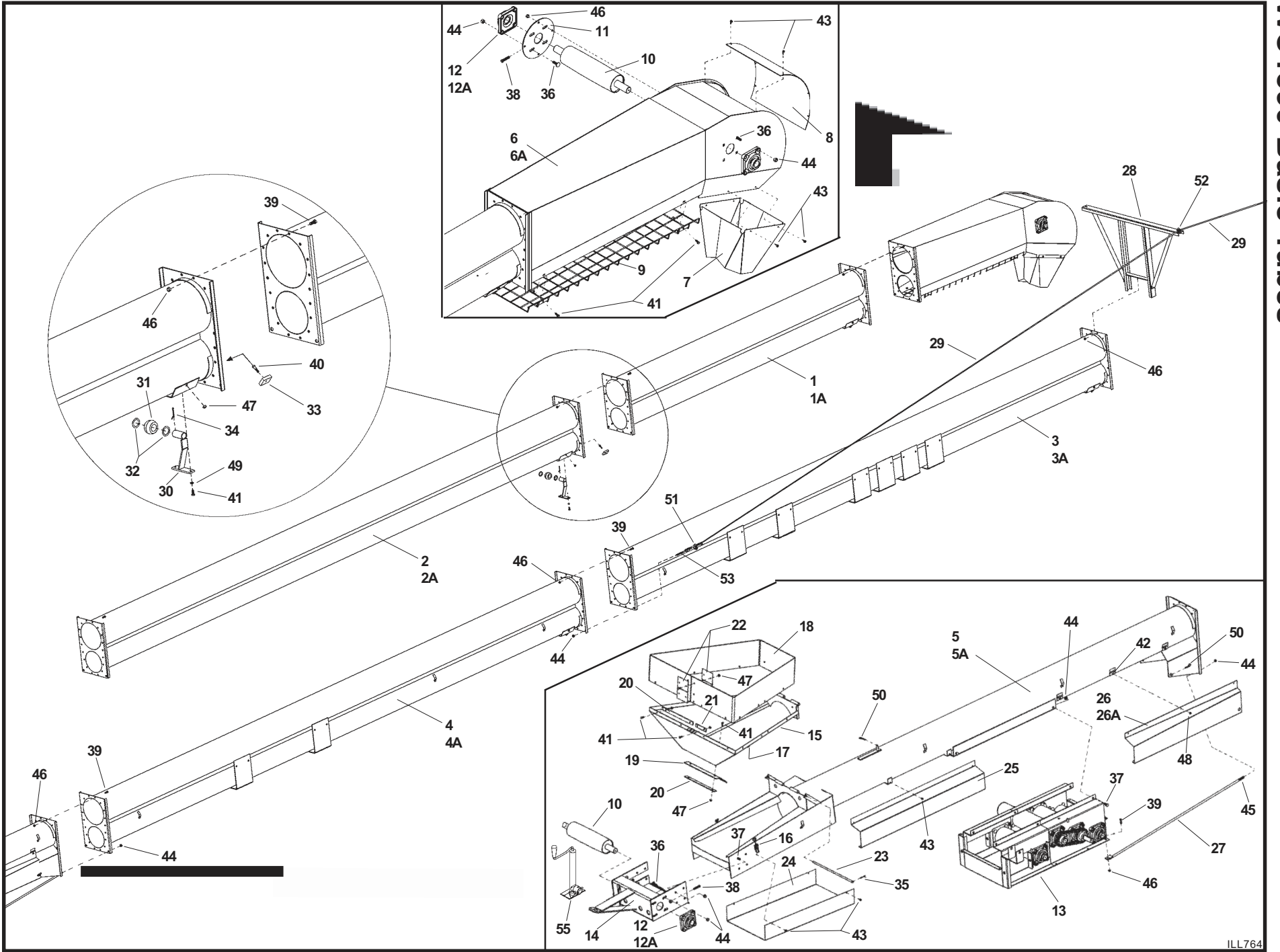
Parts Kit





REF. NO.	PART NO.	PARTS DESCRIPTION	NO. REQ'D
1	17787	Upper tube section (20')	1
1A	17855	Upper tube bundle (20'), as shipped	1
2	17907	Middle tube section (20')	1
2A	17910	Middle tube bundle (20'), as shipped	1
3	17908	Lower tube section (20')	1
3A	17911	Lower tube bundle (20'), as shipped	1
4	17782	Intake tube section	1
4A	17784	Intake tube bundle, as shipped	1
5	17850	Discharge section	1
5A	17851	Discharge section, as shipped	1
6	17777	Discharge spout	1
7	17775	Discharge endplate	1
8	17849	Discharge mesh	1
9	27064	End roller	1
10	17776	Bearing cover	1
11	17292	1-1/2" Bearing w/4-bolt flange	4
11A	17761	1-1/2" Bearing, less flange	4
12	17783	Drive unit, as shipped (see page K17 for parts breakdown)	1
13	17785	Skid plate, WC15	1
14	17786	Hopper	1
15	17798	Hopper latch	2
16	17799	Hopper catch	2
17	17790	Rubber belting - hopper	1
18	17791	Rubber sealing strip	1
19	18054	Attach strap, 13"	8
20	18878	Attach strap, 4-1/2"	1
21	17793	Belting connector	4
22	17853	Hopper hinge rod	1
23	17903	Bottom shield	1
24	17794	Lower drive shield	2
25	17795	Upper drive shield - RH	1
25A	17796	Upper drive shield - LH	1
26	17870	Drive brace rod	2
27	17778	Truss support bracket	1
28	17815	5/16" Truss cable, 41' 5" long	2
29	17789	Tube belt guide	3
30	18691	Wood bearing, 1-1/4"	3
31	17651	Rim washer, 1-1/4"	6
32	17792	Belt guide wear block	6
33	19271	Cotter pin, 1/8" x 1-1/2"	3
34	18155	Cotter pin, 3/16" x 1-1/4"	2

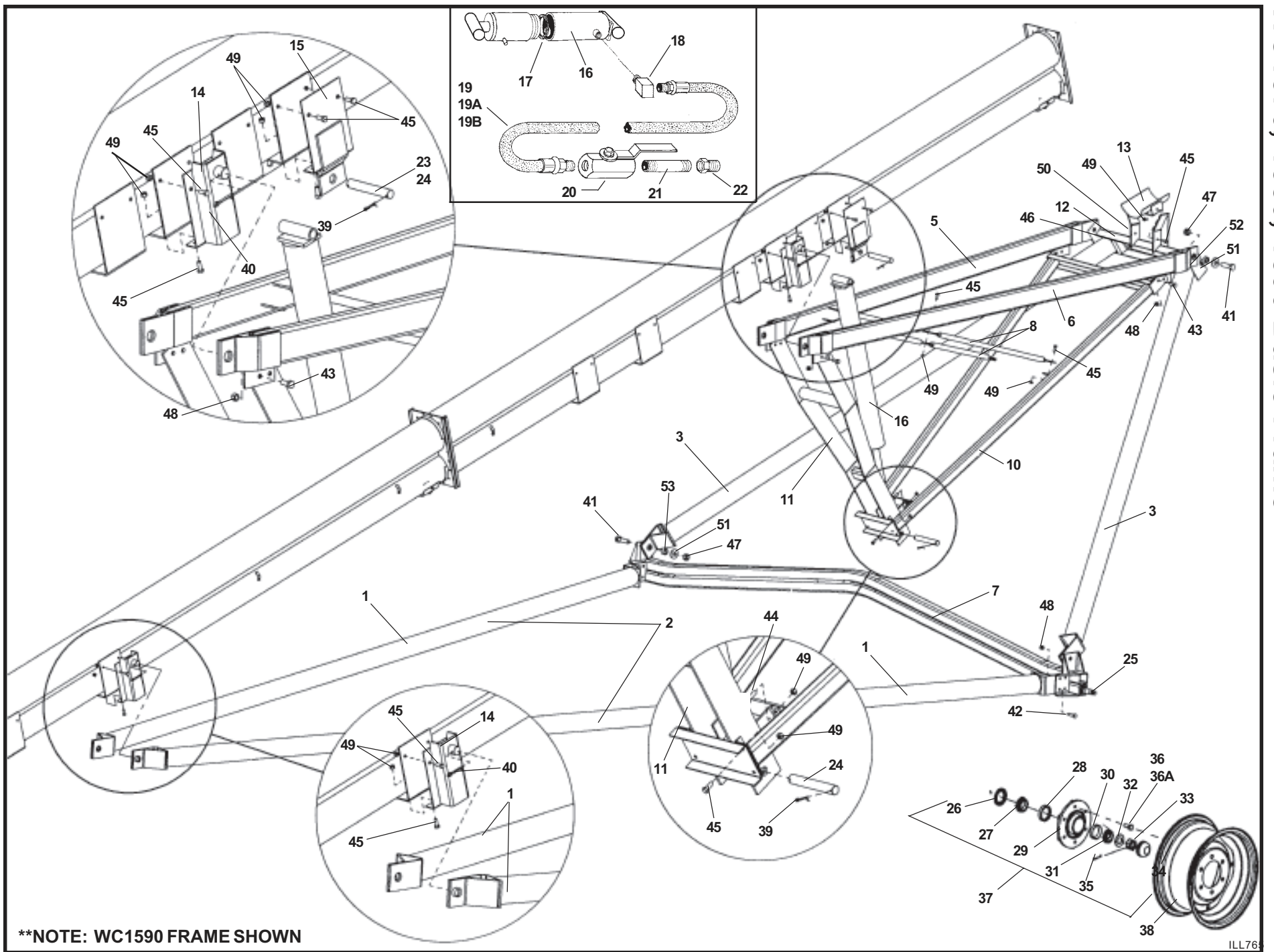
REF. NO.	PART NO.	PARTS DESCRIPTION	NO. REQ'D
35	17807	Carriage bolt, 1/2" - 13 x 1-1/2", grade 5	16
36	19588	Bolt, 1/2" - 13 x 1-1/4", grade 5	12
37	17819	Setscrew, 7/16" - 14 x 2", grade 8	3
38	19542	Bolt, 7/16" - 14 x 1", grade 5	78
39	17748	Bolt, 5/16" - 18 x 1-1/4", grade 2	6
40	19538	Bolt, 5/16" - 18 x 3/4", grade 5	32
41	19537	Bolt, 1/4" - 20 x 1/2", grade 5	6
42	19274	Selftapping screw, #14 x 5/8" w/washerhead	22
43	19599	Locknut, 1/2" - 13	30
44	19602	Hex nut, 1/2" - 13	2
45	19598	Locknut, 7/16" - 14	78
46	19595	Washer locknut 5/16" - 18	32
47	19594	Washer locknut 1/4" - 20	6
48	19603	Lockwasher, 5/16"	6
49	19463	Hair pin	3
50	19333	5/16" Cable clamp	2
51	19147	1/4" Cable clamp	2
52	19331	Eyebolt, 1/2" - 13 x 5" w/locknut	2
53	17810	WC1580 chevron belting (c/w lacing, pin & washers)	1
53A	17995	WC15 belt lacing kit (c/w lacing, pin & washers)	-
54	17803	WC15 Jack	1
55	17831	WC1580 decal	2
56	17829	4-7/8" Westfield decal, red/black	2
--	17987	Basic crate	1
		Note: From series no. 156989, the intake tube section has been changed. For augers before that, if you order the intake tube, you have to order the hopper as well because the old hopper won't fit the new tube.	



REF. NO.	PART NO.	PARTS DESCRIPTION	NO. REQ'D
1	17788	Upper tube section (10')	1
1A	17856	Upper tube bundle (10'), as shipped	1
2	17787	Upper tube section (20')	1
2A	17855	Upper tube bundle (20'), as shipped	1
3	17907	Middle tube section (20')	1
3A	17910	Middle tube bundle (20'), as shipped	1
4	17908	Lower tube section (20')	1
4A	17911	Lower tube bundle (20'), as shipped	1
5	17782	Intake tube section	1
5A	17784	Intake tube bundle, as shipped	1
6	17850	Discharge section	1
6A	17851	Discharge section, as shipped	1
7	17777	Discharge spout	1
8	17775	Discharge endplate	1
9	17849	Discharge mesh	1
10	27064	End roller	1
11	17776	Bearing cover	1
12	17292	1-1/2" Bearing w/ 4-bolt flange	4
12A	17761	1-1/2" Bearing, less flange	4
13	17783	Drive unit, as shipped (see page K17 for parts breakdown)	1
14	17785	Skid plate, WC15	1
15	17786	Hopper	1
16	17798	Hopper latch	2
17	17799	Hopper catch	2
18	17790	Rubber belting - hopper	1
19	17791	Rubber sealing strip	1
20	18054	Attach strap, 13"	8
21	18878	Attach strap, 4-1/2"	1
22	17793	Belting connector	4
23	17853	Hopper hinge rod	1
24	17903	Bottom shield	1
25	17794	Lower drive shield	2
26	17795	Upper drive shield - RH	1
26A	17796	Upper drive shield - LH	1
27	17870	Drive brace rod	2
28	17778	Truss support bracket	1
29	17915	5/16" Truss cable, 51' 5" long	2
30	17789	Tube belt guide	4
31	18691	Wood bearing, 1-1/4"	4
32	17651	Rim washer, 1-1/4"	8
33	17792	Belt guide wear block	8

REF. NO.	PART NO.	PARTS DESCRIPTION	NO. REQ'D
34	19271	Cotter pin, 1/8" x 1-1/2"	4
35	18155	Cotter pin, 3/16" x 1-1/4"	2
36	17807	Carriage bolt, 1/2" - 13 x 1-1/2", grade 5	16
37	19588	Bolt, 1/2" - 13 x 1-1/4", grade 5	12
38	17819	Setscrew, 7/16" - 14 x 2", grade 8	3
39	19542	Bolt, 7/16" - 14 x 1", grade 5	96
40	17748	Bolt, 5/16" - 18 x 1-1/4", grade 2	8
41	19538	Bolt, 5/16" - 18 x 3/4", grade 5	34
42	19537	Bolt, 1/4" - 20 x 1/2", grade 5	6
43	19274	Selftapping screw, #14 x 5/8" w/ washerhead	22
44	19599	Locknut, 1/2" - 13	30
45	19602	Hex nut, 1/2" - 13	2
46	19598	Locknut, 7/16" - 14	96
47	19595	Washer locknut 5/16" - 18	34
48	19594	Washer locknut 1/4" - 20	6
49	19603	Lockwasher, 5/16"	8
50	19463	Hair pin	3
51	19333	5/16" Cable clamp	2
52	19147	1/4" Cable clamp	2
53	19331	Eyebolt, 1/2" - 13 x 5" w/locknut	2
54	17811	WC1590 chevron belting (c/w lacing, pin & washers)	1
54A	17995	WC15 belt lacing kit (c/w lacing, pin & washers)	-
55	17803	WC15 Jack	1
56	17832	WC1590 decal	2
57	17829	4-7/8" Westfield decal (red/black)	2
--	17988	Basic crate	1
		Note: From series no. 156989, the intake tube section has been changed. For augers before that, if you order the intake tube, you have to order the hopper as well because the old hopper won't fit the new tube.	

WC1570, 1580, 1590 Basic Frame



**NOTE: WC1590 FRAME SHOWN

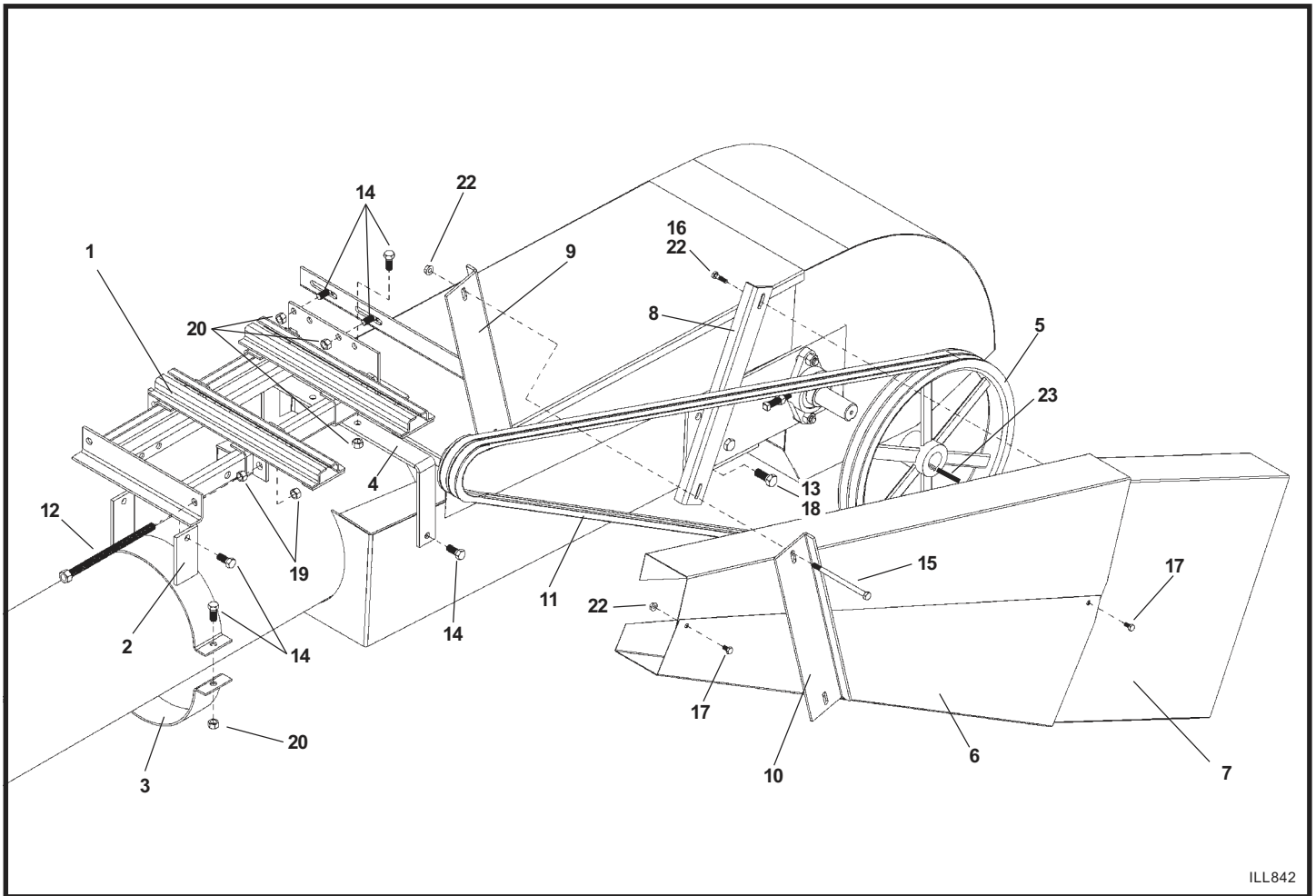
ILL76

K12

Jan-05

WC13 SERIES

EMD - Electric Motor Drive

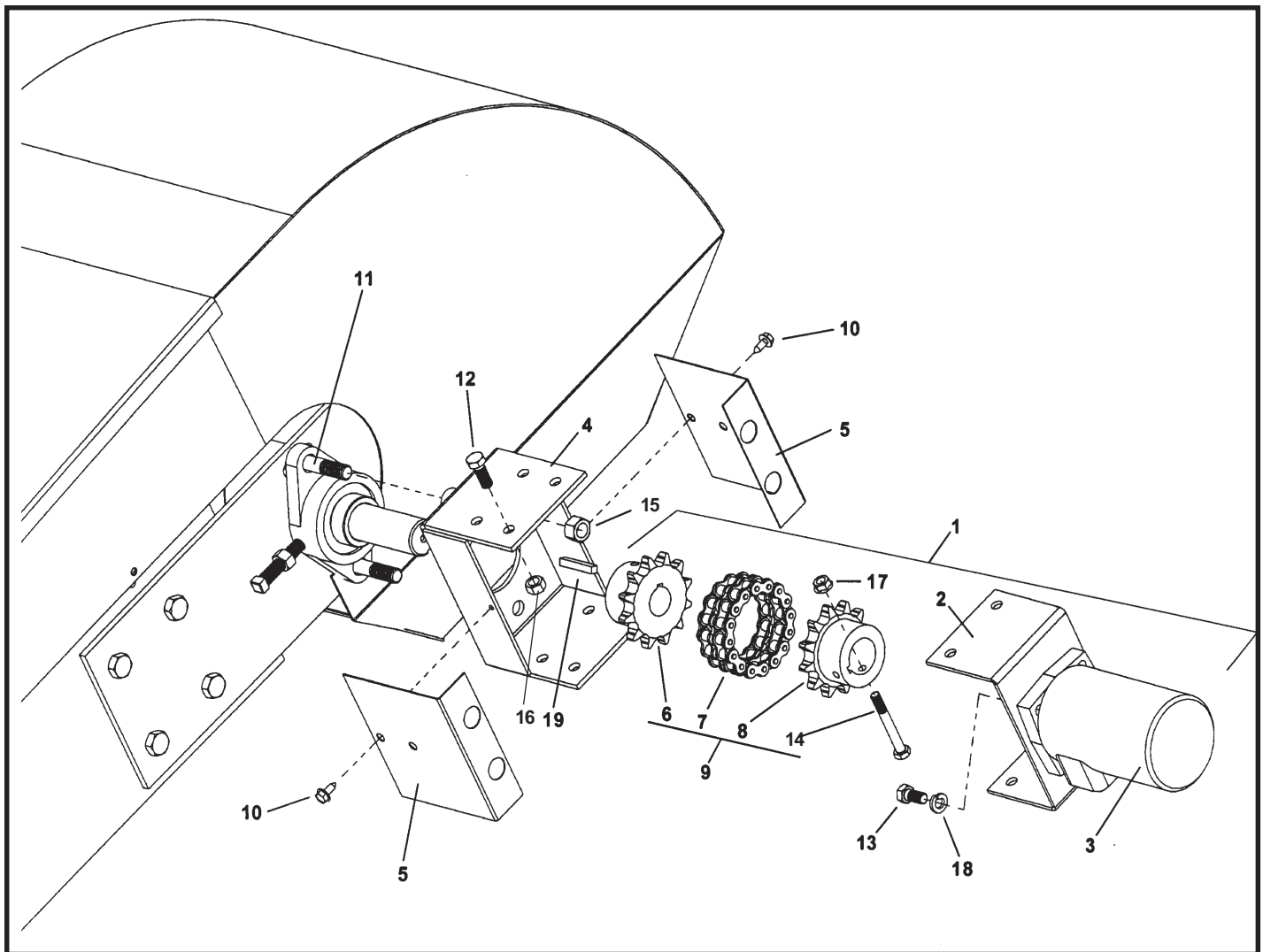


ILL842

REF. NO.	PART NO.	PARTS DESCRIPTION	NO. REQD
1	19927	Electric motor mount	1
2	19925	EMD halfband bracket (W & WR100)	1
3	19801	10" tube halfband (W & WR100)	1
4	27278	WC13 EMD support bracket	1
5	19950	Double groove 15" pulley (1-1/4" bore)	1
6	17240	W130 x 41 pulley shield	1
7	27268	WC13 pulley shield extension	1
8	27252	Upper shield mount	1
9	27270	Lower shield mount	1
10	19932	Attach bracket	1
11	27281	Belt, B124"	2
12	19937	Bolt, 1/2" - 13 x 8-1/2", special	2
13	19588	Bolt, 1/2" - 13 x 1-1/4", grade 5	1
14	19542	Bolt, 7/16" - 14 x 1", grade 5	10
15	19936	Bolt, 5/16" - 18 x 5", grade 2	2
16	19988	Bolt, 1/4" - 20 x 1", grade 2	2
17	19537	Bolt, 1/4" - 20 x 1/2", grade 2	2
18	19599	Locknut, 1/2" - 13	1
19	19602	Hex nut, 1/2" - 13	4
20	19598	Locknut, 7/16" - 14	10
21	19595	Washer-locknut, 5/16" - 18	2
22	19594	Washer-locknut, 1/4" - 20	4
23	17854	Square key, 1/4" x 2-1/2"	1
--	27275	EMD carton	1

WC13 SERIES

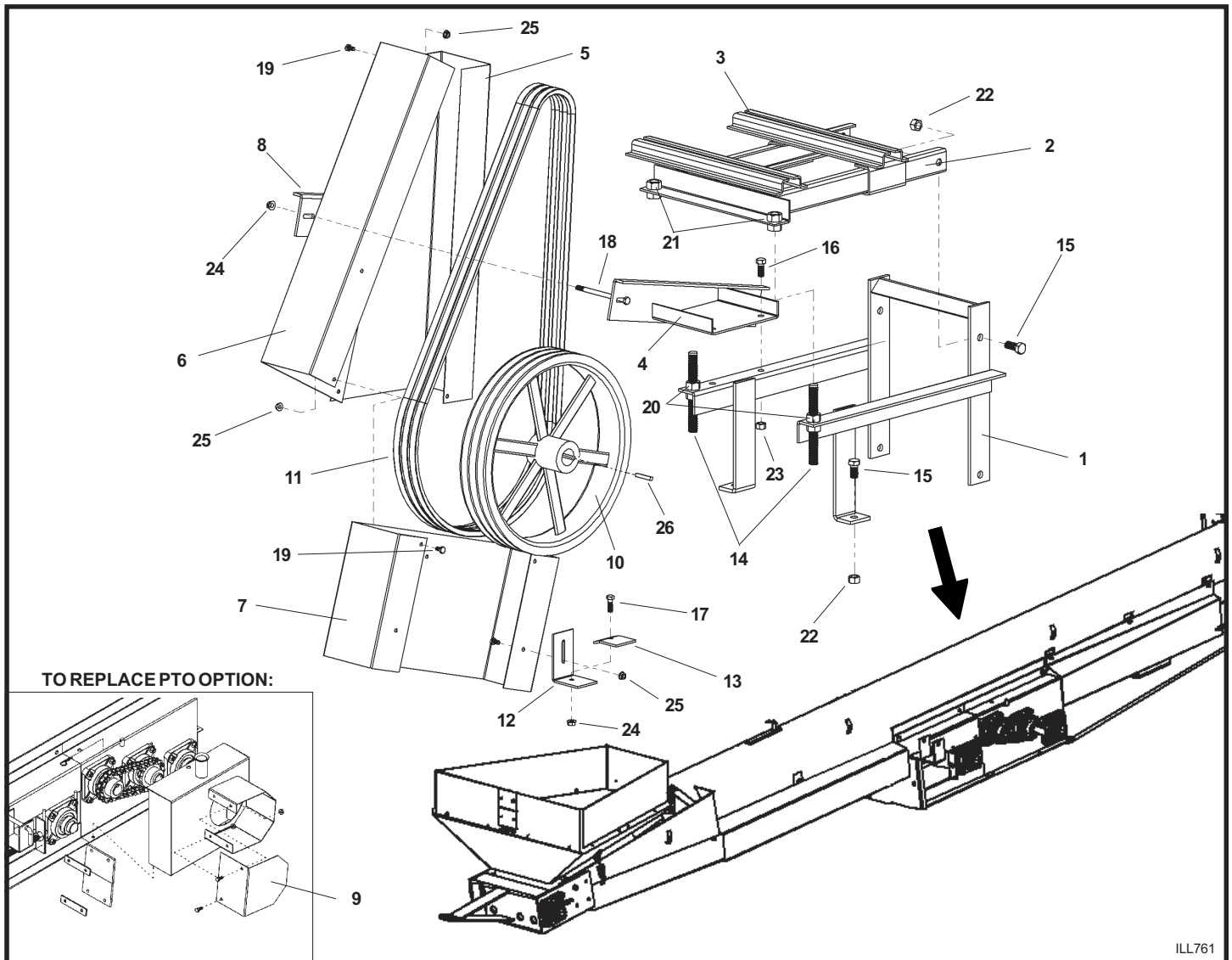
Hydraulic Motor Drive



REF. NO.	PART NO.	PARTS DESCRIPTION	NO. REQD
1	27324	Motor assembly, as shipped	1
2	27286	Motor mount plate	1
3	17683	Hydraulic motor 4.5 cu.in. w/ 1" shaft	1
4	27285	Bearing mount plate	1
5	27323	Hydraulic drive shield	2
6	19802	Flex connector sprocket, 1-1/4" bore w/ keyway	1
7	19559	Roller chain w/ connector link	1
8	17591	Flex connector sprocket, 1" bore w/ bolt	1
9	27271	Flex chain coupler, 1" x 1-1/4" bore	1
10	19952	Selftapping screw, #14 x 5/8" w/washerhead	2
11	19976	Bolt, 1/2" - 13 x 2-1/2", grade 8	2
12	18955	Bolt, 3/8" - 16 x 1", grade 5	4
13	18184	Bolt, 3/8" - 16 x 3/4", grade 5	4
14	17631	Bolt, 5/16" - 18 x 2-1/2", grade 2	1
15	19899	Locknut, 1/2" - 13	2
16	17402	Locknut, 3/8" - 16	4
17	19595	Washer-locknut, 5/16" - 18	1
18	19604	Lockwasher, 3/8"	4
19	19606	Square key, 1/4" x 1-1/2"	1
--	27275	Hydraulic drive carton	1

WC1570, WC1580, WC1590

EMD - Electric Motor Drive



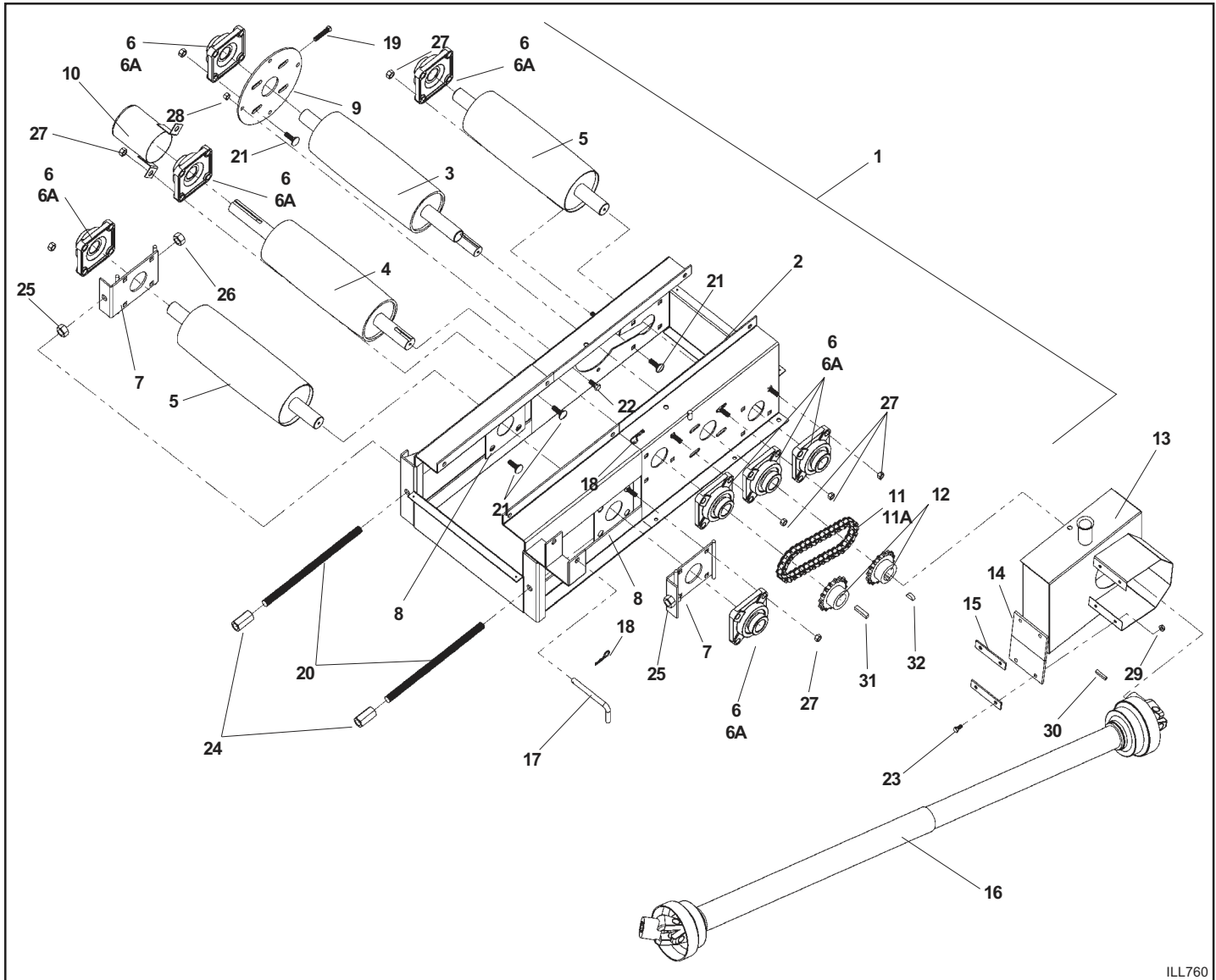
ILL761

REF. NO.	PART NO.	PARTS DESCRIPTION	NO. REQ'D
1	17900	EMD base	1
2	17901	EMD hinge	1
3	17993	EMD slide	1
4	17904	Pulley shield attach bracket	1
5	17485	UT13 pulley shield - RH	1
6	17486	UT13 pulley shield - LH	1
7	17487	UT13 pulley shield extension	1
8	19932	EMD shield attach angle	1
9	17902	WC15 PTO shaft cover	1
10	17913	16" triple groove pulley: 1-1/2" bore	1
11	17997	B77 belt	3
12	17905	Pulley shield support	1
13	17906	Pulley shield clip	1
14	17914	Adjust rod, 5/8" x 6", grade 2	2
15	19588	Bolt, 1/2" - 13 x 1-1/4", grade 5	4
16	19542	Bolt, 7/16" - 14 x 1", grade 5	2
17	18091	Bolt, 5/16" - 18 x 1", grade 2	1
18	17994	Bolt, 5/16" - 18 x 6", grade 2	2
19	19537	Bolt, 1/4" - 20 x 1/2", grade 5	5

REF. NO.	PART NO.	PARTS DESCRIPTION	NO. REQ'D
20	19864	Hex nut, 5/8" - 11	6
21	19600	Locknut, 5/8" - 11	2
22	19599	Locknut, 1/2" - 13	4
23	19542	Locknut, 7/16" - 14	2
24	19595	Washer locknut, 5/16" - 18	3
25	19594	Washer locknut, 1/4" - 20	5
26	18541	Square key, 3/8" x 3-1/2"	1

PTO - Drive

WC1570, WC1580, WC1590



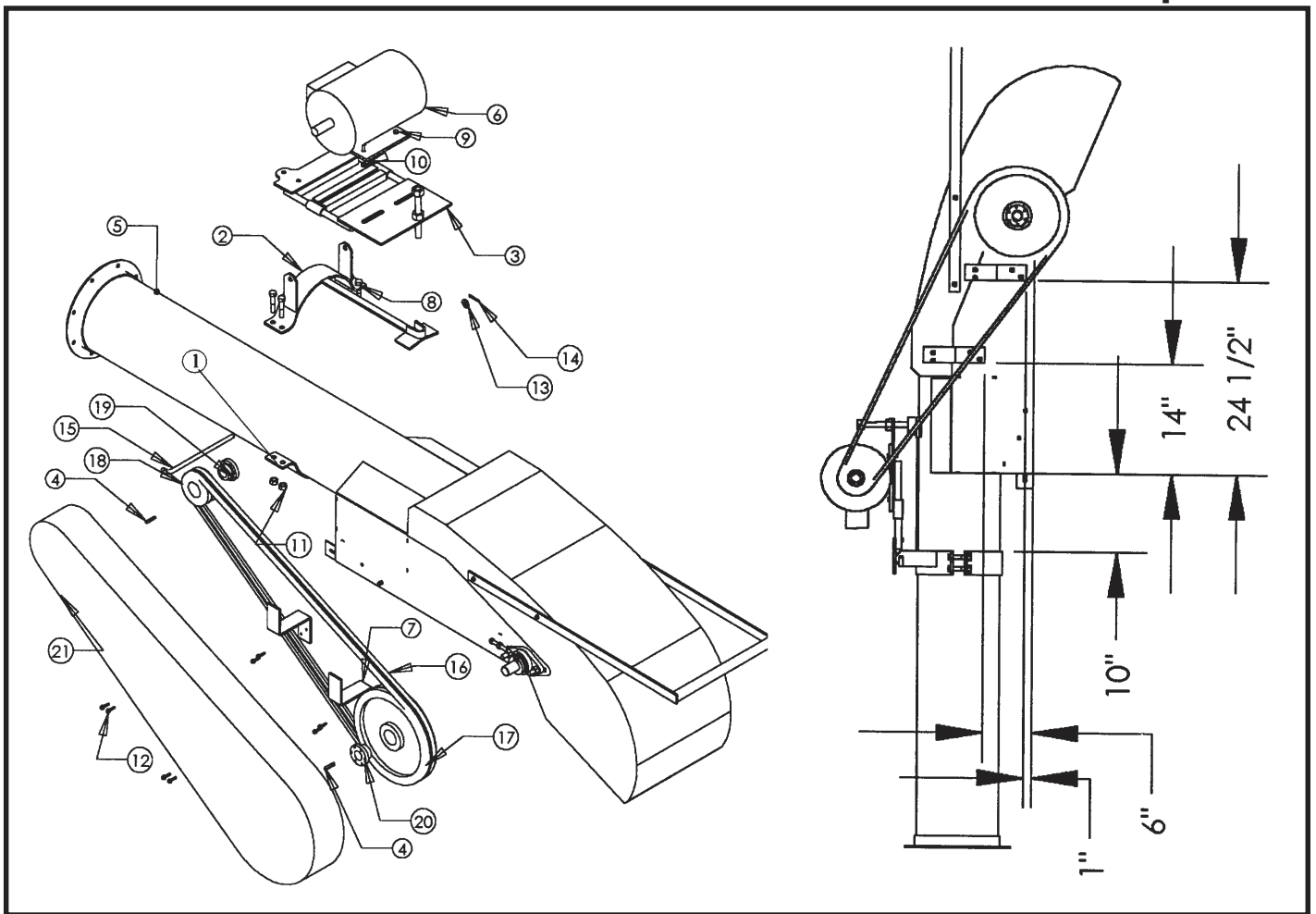
ILL760

REF. NO.	PART NO.	PARTS DESCRIPTION	NO. REQD
1	17783	Drive unit assembly, as shipped	1
2	17781	Drive weldment	1
3	27068	Main drive roller (rubberized)	1
4	27069	Secondary drive roller (rubberized)	1
5	27063	Idler roller	2
6	17292	1-1/2" Bearing w/ 4 bolt flange	8
6A	17761	1-1/2" Bearing, less flange	8
7	17804	Slider plate	2
8	17999	Bearing back plate	2
9	17776	Bearing cover	1
10	17897	Shaft guard	1
11	17808	Roller chain w/ connector - 60B16 x 35P	1
11A	19433	Roller chain connector only	1
12	17253	Drive sprocket, 16 tooth	2
13	17797	Chain housing	1
14	17229	Rubber flap	2
15	18878	Attach strap, 4-1/2"	2
16	27415	PTO driveline, 72" long	1
17	19648	Saddle pin, less hairpin	1

REF. NO.	PART NO.	PARTS DESCRIPTION	NO. REQD
18	19463	Hairpin	2
19	17819	Setscrew, 7/16" x 2", grade 8	1
20	17805	Take-up rod, 3/4" x 6", grade 2	2
21	17807	Carriage bolt, 1/2" - 13 x 1-1/2", grade 5	32
22	19542	Bolt, 7/16" - 14 x 1", grade 5	4
23	19538	Bolt, 5/16" - 18 x 3/4", grade 2	4
24	17806	Coupling nut, 3/4" - 10	2
25	19997	Hex nut, 3/4" - 10	4
26	19601	Locknut, 3/4" - 10	2
27	19599	Locknut, 1/2" - 13	32
28	19542	Locknut, 7/16" - 14	4
29	19595	Washer locknut, 5/16" - 18	4
30	19606	Square key, 1/2" x 1-1/2"	1
31	17066	Square key, 3/8" x 1-3/4"	1
32	17812	Woodruff key, 3/8" x 1"	1

WC1515 Transfer

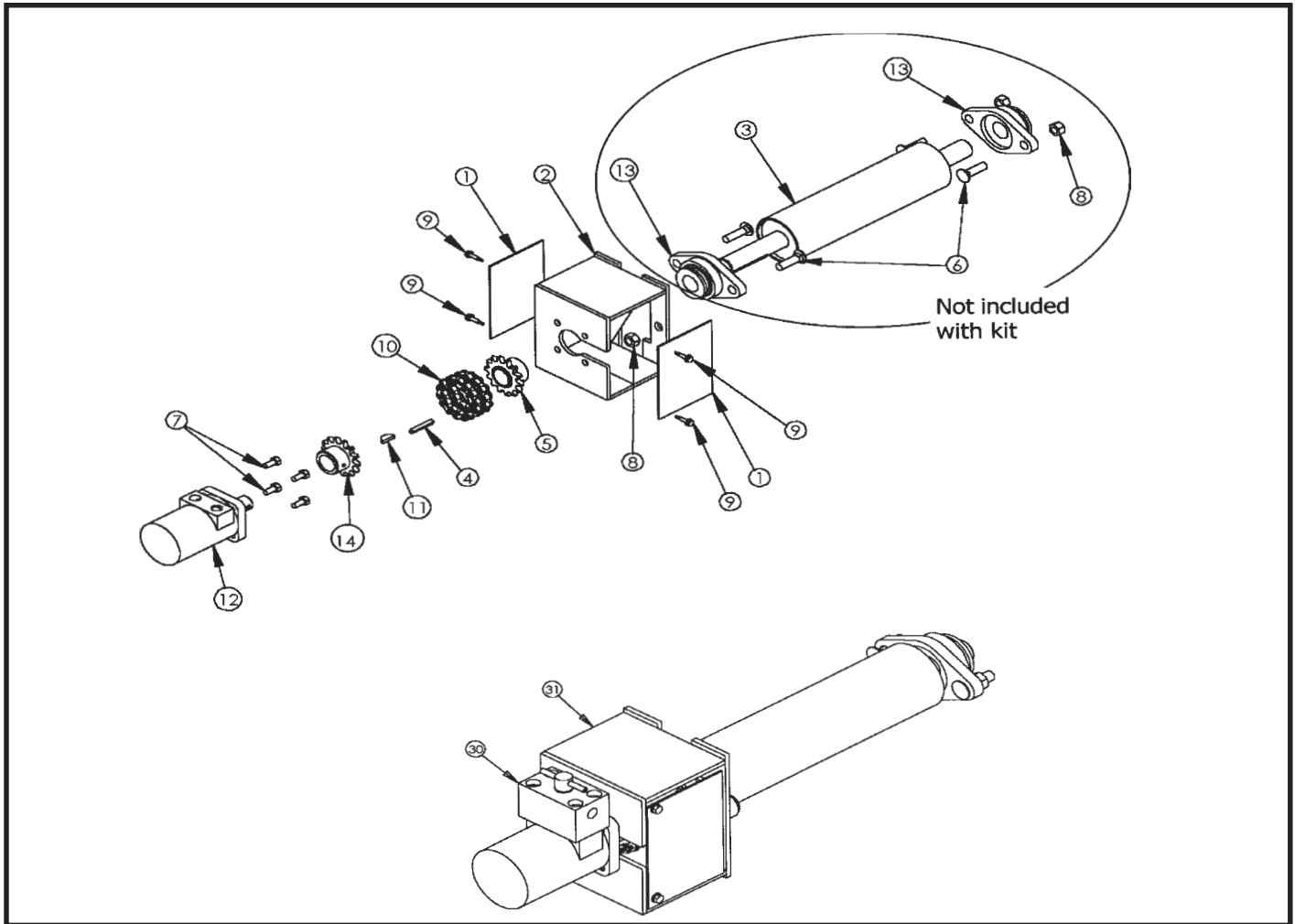
Electric Top Drive



REF. NO.	PART NO.	PARTS DESCRIPTION	NO. REQD
1	27370	3" U Clamp	1
2	27401	Electric motor clamp	1
3	27400	Electric motor mount base	1
4	19606	Key, 1/4" X 1.5"	2
5	---	15 Series spout assembly	1
6	---	Electric motor	1
7	27403	Guard mount	2
8	27380	Bolt, 1/2" - 13 X 2-1/2", grade 5	4
9	18091	Bolt, 5/16" - 18 X 1", grade 2	4
10	19980	Nylon locknut, 5/16" - 18	4
11	19599	Nylon locknut, 1/2" - 13	4
12	27382	Teks, 1"	8
13	17401	Flat washer, 1/2"	1
14	27384	Cotter pin, 3/16" X 1-1/2"	1
15	27402	Short motor mount pin	1
16	19212	Belt B101	2
17	27404	Pulley BK120H	1
18	---	Pulley BK40H	1
19	---	Bushing H 1.125	1
20	27405	Bushing H 1.25	1
21	27228	Pit stop plastic pulley guard	1

WC1515 Transfer

Hydraulic Top Drive



REF. NO.	PART NO.	PARTSDESCRIPTION	NO. REQD
1	27397	1-1/4" HYD Motor guard	2
2	27396	HYD Motor mount 1314	1
3	27365	Spout drive roller	1
4	19606	Key, 1/4" X 1.75"	1
5	19802	Sprocket 5014 W 1.25(Key0.25)	2
6	17807	Carriage bolt, 1/2" X 1-1/2"	4
7	18184	Bolt, 3/8" - 16 X 3/4", grade 5	4
8	19602	Hex nut, 1/2" - 13	4
9	27382	TEKS 1"	4
10	19559	Chain coupling 5014	1
11	---	Spring pin, 3/8" X 2"	1
12	27188	Eaton HYD motor H-5.9 CPR	1
13	27246	1-1/4" Bearing + flange	2
30	27189	Speed control valve	1
31	---	Top drive sprout HYD (30-45)	1